



# Tornado T2

## Tornado T2 20W CDL E27 220-240V 1PF/6

Tornado has outstanding brightness which makes your colors appear more Vivid. It fits everywhere due to its compact design. With comprehensive product range, it allows easy replacement of incandescent lamps all the way.

### Warnings and Safety

- Breaking a lamp is extremely unlikely to have any impact on your health. If a lamp breaks, ventilate the room for 30 minutes and remove the parts, preferably with gloves. Put them in a closed plastic bag and take it to your local waste facilities for recycling. Do not use a vacuum cleaner.
- Compact fluorescent lamps have to be treated as special waste, they must be taken to your local waste facilities for recycling. The European Lighting Industry has set up an infrastructure, capable of recycling mercury, other metals, glass etc.

### Product data

General Information		LLMF At End Of Nominal Lifetime (Nom)	
Cap-Base	E27 [ E27]	65 %	
Nominal Lifetime (Nom)	10000 h	Operating and Electrical	
Switching Cycle	10000X	Input Frequency	50 or 60 Hz
Rated Lifetime (Hours)	10000 h	Power (Nom)	20.0 W
Light Technical		Lamp Current (Nom)	150 mA
Color Code	865 [ CCT of 6500K]	Starting Time (Nom)	0.3 s
Luminous Flux (Nom)	1305 lm	Warm Up Time to 60% Light (Min)	5 s
Luminous Flux (Rated) (Nom)	1305 lm	Warm Up Time to 60% Light (Max)	40 s
Color Designation	Cool Daylight	Power Factor (Nom)	0.6
Lumen Maintenance 2000 h (Nom)	88 %	Voltage (Nom)	220-240 V
Chromaticity Coordinate X (Nom)	313	Controls and Dimming	
Chromaticity Coordinate Y (Nom)	337	Dimmable	No
Correlated Color Temperature (Nom)	6500 K		
Luminous Efficacy (rated) (Nom)	64 lm/W		
Color Rendering Index (Nom)	80		

## Tornado T2

### Mechanical and Housing

Bulb Shape	Spiral
------------	--------

### Approval and Application

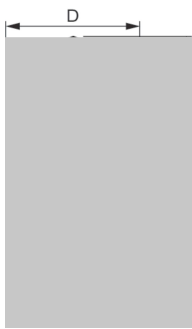
Mercury (Hg) Content (Max)	2.0 mg
Mercury (Hg) Content (Nom)	1.5 mg
Energy Consumption kWh/1000 h	20 kWh

### Product Data

Full product code	871016340515500
-------------------	-----------------

Order product name	Tornado T2 20W CDL E27 220-240V 1PF/6
EAN/UPC - Product	8710163405155
Order code	929689115001
Numerator - Quantity Per Pack	1
Numerator - Packs per outer box	6
Material Nr. (12NC)	929689115001
Net Weight (Piece)	0.064 kg

## Dimensional drawing



Product	D (max)	C (max)	F (max)
Tornado T2 20W CDL E27 220-240V 1PF/6	56.5 mm	116.0 mm	47 mm

QSPIR-F Erp 20W/865 E27 220-240V 50/60Hz

