



Essential Smartbright T5 Batten

BN058C LED11/CW L1200 GM

Polycarbonate

BN058 Batten provide flexibility to customer to choose from 3 CCT and 4 different size and lumen packages, based on their specific need.

Product data

General Information		Optical cover/lens finish	
Light source color	765 cool daylight	Optical cover/lens finish	Opal
Optical cover/lens type	Polycarbonate	Overall length	1185 mm
Control interface	-	Overall width	21 mm
Protection class IEC	Safety class II	Overall height	32.3 mm
CE mark	-	Color	White
Number of products on MCB of 16 A type B	8	Approval and Application	
Light source engine type	LED	Ingress protection code	IP20 [Finger-protected]
Operating and Electrical		Mech. impact protection code	IK02 [0.2 J standard]
Input Voltage	220 to 240 V	Initial Performance (IEC Compliant)	
Input Frequency	50 or 60 Hz	Initial luminous flux (system flux)	1200 lm
Power Factor (Min)	0.5	Luminous flux tolerance	+/-10%
Controls and Dimming		Initial LED luminaire efficacy	85 lm/W
Dimmable	No	Init. Corr. Color Temperature	6500 K
Mechanical and Housing		Init. Color Rendering Index	>70
Housing Material	Polycarbonate	Initial input power	13 W
Optical cover/lens material	Polycarbonate	Power consumption tolerance	+/-10%

Essential Smartbright T5 Batten

Application Conditions

Ambient temperature range -20 to +40 °C

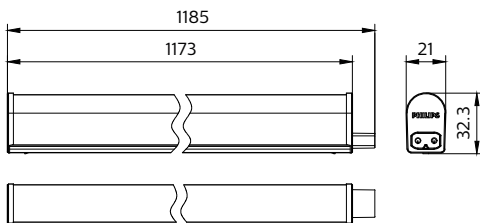
Product Data

Full product code 871016331396299
Order product name BN058C LED11/CW L1200 GM
EAN/UPC - Product 8710163313962
Order code 911401709542

Numerator - Quantity Per Pack	1
Numerator - Packs per outer box	24
Material Nr. (12NC)	911401709542
Net Weight (Piece)	0.140 kg



Dimensional drawing



Batten LED

