



DS-HF

DS-HF SERIES



- Single phase Surge protector with RFI filtering
- In: 3kA
- Imax: 10 kA
- Common and differential mode protection
- Low protection level
- Operating/disconnection indicators
- IEC 61643-11, EN 61643-11 and UL1449 ed.5 compliance

Characteristics

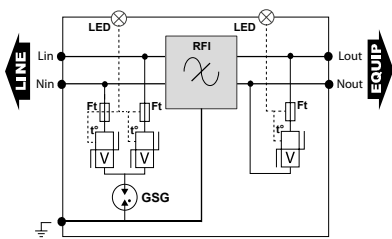
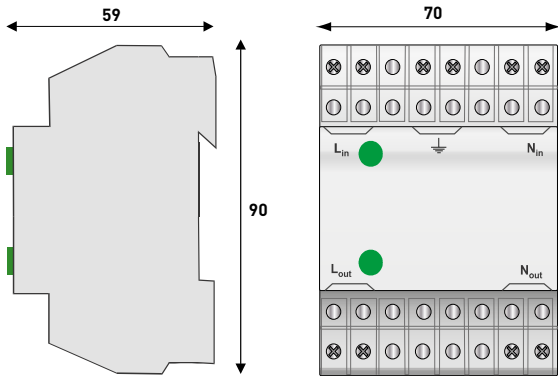
CITEL Model	DS-HF	DS-HF-120
Description	Type 2+3 single-phase surge protector and filter	
Network	230 V single phase	120 V single phase
Connection mode	L/N/PE	L/N/PE
AC system	TT-TN	TT-TN
Max. AC operating voltage	Uc 250 Vac	150 Vac
Max. Load current	IL 16 A	16 A
Temporary Over Voltage (TOV) characteristics - 5 sec.	UT 335 Vac withstand	180 Vac withstand
Temporary Over Voltage (TOV) characteristics - 120 mn	UT 440 Vac disconnection	230 Vac disconnection
Residual current - Leakage current at Uc	Ipe < 1 mA	< 1 mA
Follow current	If None	None
Nominal discharge current <i>15 x 8/20 μs impulses</i>	In 3 kA	3 kA
Max. discharge current <i>max. withstand @ 8/20 μs by pole</i>	Imax 10 kA	10 kA
Withstand on Combination waveform - Class III test	Uoc 10 kV	10 kV
Protection level @In [8/20μs]	Up 1 kV/ 0.8 kV	0.6 kV/0.5 kV
Admissible short-circuit current	Iscsr 10000 A	10000 A
RFI Filtering	0.1 - 30 MHz	0.1 - 30 MHz

Associated disconnectors	
Thermal disconnector	internal
Fuses	Fuses type gG - 20 A max. (if necessary)
Installation ground fault breaker (if any)	Type "S" or delayed

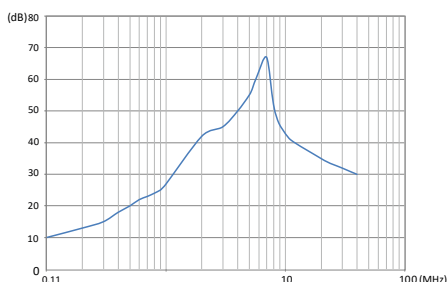
Mechanical characteristics	
Dimensions	see diagram
Connection to Network	by screw terminals: 0.75 - 4 mm ²
Disconnection indicator	Green led(s) off
Remote signaling of disconnection	none
Mounting	Symmetrical rail 35 mm (EN60715)
Operating temperature	-40/+85°C
Protection rating	IP20
Housing material	Thermoplastic UL94 V-0

Standards compliance	
Certification	EAC
Compliance	IEC 61643-11 / EN 61643-11 / UL1449 ed.5

Part number	
	77945
	77948



V: Varistor
 GSG: Specific GDT
 Ft: Thermal fuse
 t°: Thermal disconnection system
 LED : Operating indicator
 RFI: RFI filtering



Attenuation curve