



RESIDUAL CURRENT MEASURE- MENT DEVICE

RCM 202-AB

(as of firmware 1.3.0)

Data sheet

APPLICATION AND FUNCTION

The RCM-202-AB is used with connected current transformers to measure and monitor residual currents in TN and TT systems (grounded AC systems). The main functions of the RCM-202-AB are:

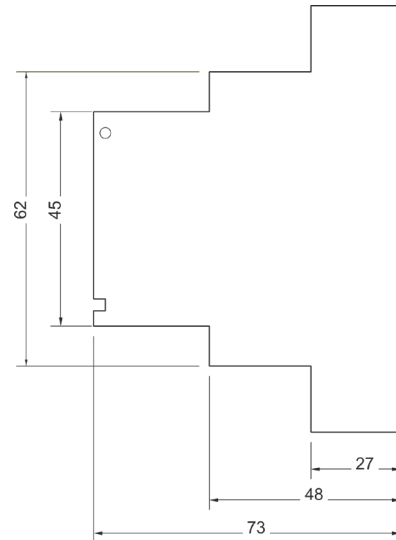
- Residual current measurement via up to two connected current transformers
- Converter connection monitoring for wire breakage or short circuit per channel
- Evaluation of residual currents (differential currents) type A and B according to IEC 62020
- Detection of sinusoidal AC residual currents with frequencies up to 20 kHz (type B+)
- Memory for measured values and extreme values with time stamp
- parameterizable response thresholds per channel (warning message and alarm message)
- parameterizable delay times and reset delay times of the response messages
- Indication of operating and error messages in the display
- Communication via Modbus (RS-485 interface/Modbus RTU)

DEVICE VIEWS

Front view



Side view



Device dimensions in mm

TECHNICAL DATA

General	
Supply voltage U_s	AC 90 to 230 V, 50/60 Hz
Operating mode	Continuous operation
Power consumption (own consumption)	8 W
Measuring channels	
Number of measuring channels	2 (current transformers, can be connected)
Measured value acquisition	Parallel, true RMS
Evaluation	Residual current types A and B to IEC 62020
Rated residual current $I_{\Delta n}$	Configurable, 20 mA ... 20 A
Response delay	parametrizable, 10 ms to 10 s
Reset delay	parametrizable, 10 ms to 10 s
Transformer connections	
Connection to current transformers	Line resistance max. 2 Ω
Transformer cable	2-conductor
Displays, messages and memory	
Full graphic display (LCD)	128 x 64 pixels
LED status	Three-color
Controls	3 buttons
Menu languages	German, English, Spanish
Date and time	With RTC, zero-voltage safe
Configuration	On RCM 202-AB in the menu
Messages	Display/ LED/ Modbus/ digital outputs
Electromagnetic compatibility (EMC)	
Compliant with IEC/EN 61326-1	

Connections	
Interface/protocol	RS-485/Modbus RTU
Transformer connection	2 x K/L (I1 and I2)
Digital outputs	2
Analog outputs	2 x 4 ... 20 mA
Supply voltage connection	N/L
Environmental conditions	
Ambient temperature (operational)	-5 to +55 °C (23°F to 131°F)
Storage temperature	-25 to +70 °C (-13°F to 158°F)
Altitude	0 to 2000 m (0 to 1.24 mi)
Climate class (operation)	3K5
Pollution degree	2
Installation conditions	
Mounting orientation	Vertical/ horizontal
Mounting	Rail mounting to DIN EN 60715
Device dimensions (W x H x D)	71 x 90 x 73 mm (2.78 x 3.54 x 2.87 in)
Horizontal pitch	4 HP
Protection level to DIN EN 60529	IP20
Protection class	II
Flammability classification	UL 94V-0
Weight	170 g (0.375 lb)

Janitza electronics GmbH
Vor dem Polstück 6 | 35633 Lahnau
Germany

Tel. +49 6441 9642-0
info@janitza.com | www.janitza.com

Subject to technical alterations.

Janitza[®]