

Wall mounted receptacle

Part no. 5959A

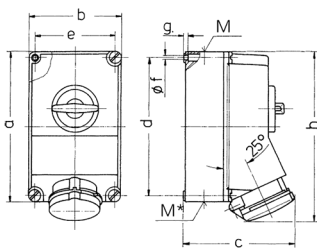


- screw terminals
- **X-CONTACT**
- switched
- mechanical DUO-interlock
- receptacles can be padlocked

Technical specifications

| | |
|---------------------------|-----------------|
| Ampere | 63 A |
| Poles | 5 p |
| Voltage | 400 V |
| Clock position | 6 h |
| Hertz | 50-60 Hz |
| Connection technology | Screw terminals |
| Contact | X-CONTACT® |
| Protection type | IP 44 |
| Enclosure material | Plastic |
| Weight | 2480 g |
| Declaration of Conformity | EAC |

Drawing



| Drawing 1 MB 234 | Amp. Poles | 63 | | |
|---|---------------|------|------|------|
| | | 3 | 4 | 5 |
| Dim. in mm | a | 264 | 264 | 264 |
| | b | 163 | 163 | 163 |
| | c | 192 | 192 | 192 |
| | d | 240 | 240 | 240 |
| | e | 140 | 140 | 140 |
| | f | 8.1 | 8.1 | 8.1 |
| | g | 8 | 8 | 8 |
| | h | 300 | 300 | 300 |
| | M | 40 | 40 | 40 |
| | M* | 2x40 | 2x40 | 2x40 |
| Max. cable diam. (mm) | | 27 | 27 | 27 |
| Terminal for cond. cross section (mm ²) min.-max. | | 6 | 6 | 6 |
| | | -25 | -25 | -25 |