

Fuse Carrier (Handle)



► Applications

Uploading and downloading of NH000-NH4 insert type fuses of all sizes to and from the bases. Reliable insulation. Safe and convenient operation. Small manual power requirements.

Rated insulate voltage up to 1000V. Working frequency 50Hz AC.

► Design Features

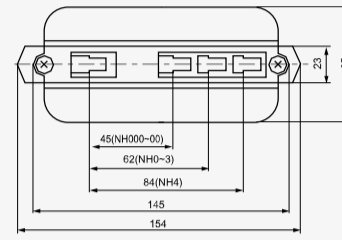
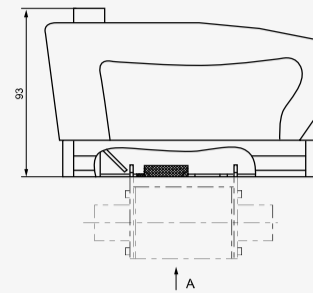
The fuse carrier is made up of catching holes, push button, guard board and handle. There are three positions for the catching holes, for NH000-NH00, NH0-NH3, and NH4 fuses.

► Basic Data

The models, rated insulation voltage, and dimensions are shown in Figures 14.1 and Table 14 .

Table 14

Cat. No.	Models	Catching holes fuse	Rated insulation voltage(V)	Dimensions (mm) Fig.	Weight (g)
1401	NT	000-4	1000	See Figure 14,1	174



View of A direction

Figure 14.1

