



**ORIENT**

**ORIENT ELECTRONICS**

<http://www.orientelec.co.kr>

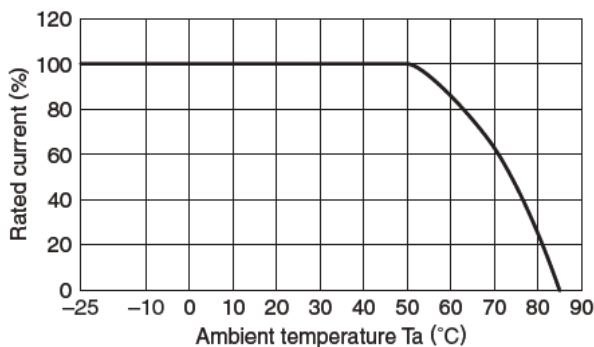
# SPECIFICATIONS

Product.	Noise Filter	Date.	2012. 09. 19
Model.	TMS-2S	Rev.	A
Customer.	STANDARD	Page.	1 / 4

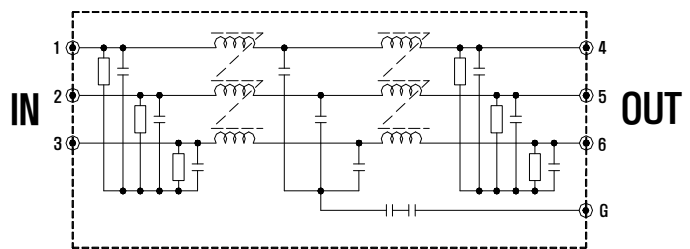
MODEL		Unit.	TMS-2006	TMS-2010	TMS-2020	TMS-2030
INPUT	Voltage	[V]	3 $\Phi$ , AC 250 or DC 250			
	Frequency	[Hz]	50 / 60			
	Rated Current *1)	[A]	6	10	20	30
Voltage Drop		[V]	0.3V Max			
Test voltage		[V]	2,500VAC (at cut off current 100mA / 1Min)			
Isolation Resistance		[M $\Omega$ ]	100M $\Omega$ Min (500VDC / 1Min)			
Leakage Current (60Hz)	250V	[mA]	2.5mA Max			
DC Resistance (Max)		[m $\Omega$ ]	290	120	50	26
Temperature Rise		[ $^{\circ}$ C]	50 $^{\circ}$ C Max			
Environment	Operating temp. & Humidity	-	-25 ~ +85 $^{\circ}$ C, 20 ~ 95% RH (Refer to Derating Curve)			
	Storage temp. & Humidity	-	-40 ~ +85 $^{\circ}$ C, 20 ~ 95% RH (Non Condensing)			
	Vibration	-	10~55Hz at 2G 3minutes period, 1hour each X,Y and Z			
Dimension	Size(WxHxD)	[mm]	210*55*95		240*60*105	
Weight(Typ)		[g]	910g		1,400g	
Safety Standards		-	Approved by standard UL1283, CSA C22.2 No.8(C-UL), IEC/EN60939-2			

비 고 :

- Derating Curve



- Circuit Diagram



= NOTES =

\*1. Value for Ta less than 50 $^{\circ}$ C

For Ta more than 50 $^{\circ}$ C, According to the derating curve as above

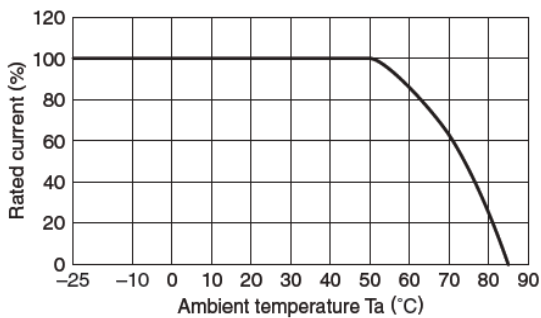
# SPECIFICATIONS

Product.	Noise Filter	Date.	2012. 09. 19
Model.	TMS-2S	Rev.	A
Customer.	STANDARD	Page.	2 / 4

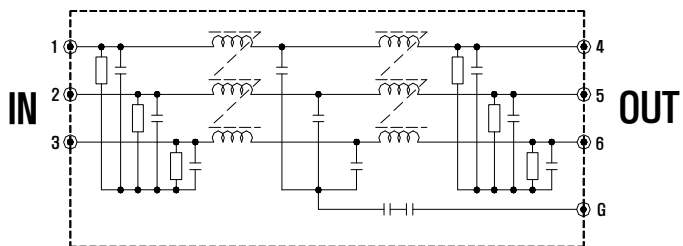
MODEL		Unit.	TMS-2040	TMS-2050	TMS-2060
INPUT	Voltage	[V]	3 $\Phi$ , AC 250 or DC 250		
	Frequency	[Hz]	50 / 60		
	Rated Current *1)	[A]	40	50	60
Voltage Drop		[V]	0.3V Max		
Test voltage		[V]	2,500VAC (at cut off current 100mA / 1Min)		
Isolation Resistance		[M $\Omega$ ]	100M $\Omega$ Min (500VDC / 1Min)		
Leakage Current (60Hz)	250V	[mA]	2.5mA Max		
DC Resistance (Max)		[m $\Omega$ ]	20	14	10
Temperature Rise		[ $^{\circ}$ C]	50 $^{\circ}$ C Max		
Environment	Operating temp. & Humidity	-	-25 ~ +85 $^{\circ}$ C, 20 ~ 95% RH (Refer to Derating Curve)		
	Storage temp. & Humidity	-	-40 ~ +85 $^{\circ}$ C, 20 ~ 95% RH (Non Condensing)		
	Vibration	-	10~55Hz at 2G 3minutes period, 1hour each X,Y and Z		
Dimension	Size(WxHxD)	[mm]	278 * 70 * 128		
	Weight(Typ)	[g]	2,800g		
Safety Standards		-	Approved by standard UL1283, CSA C22.2 No.8(C-UL), IEC/EN60939-2		

비 고 :

- Derating Curve



- Circuit Diagram



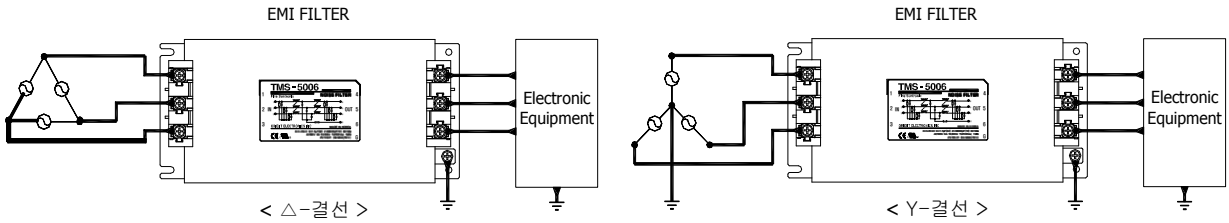
= NOTES =

- \*1. Value for Ta less than 50 $^{\circ}$ C  
For Ta more than 50 $^{\circ}$ C, According to the derating curve as above

# User Guide

## 1. INSTALLATION CONDITION

### 1-1. NOISE FILTER 결선



### 1-2. Terminal Connection

Marking	Pin Connection		Function
1	INPUT	AC R상	Noise Filter AC 입력 Terminal
2		AC S상	
3		AC T상	
4	OUTPUT	AC R상	Noise Filter AC 출력 Terminal
5		AC S상	
6		AC T상	
G	Flame ground		CASE 접지

### 1-3. Applicable Electric Cable

허용전류(A)	최소 선경	
	단면적(mm <sup>2</sup> )	AWG SIZE
6	0.75	18
10	1.0	16
16	1.5	14
20	2.5	12
30	4.0	10
40	6.0	8
50	10.0	6
60	10.0	6

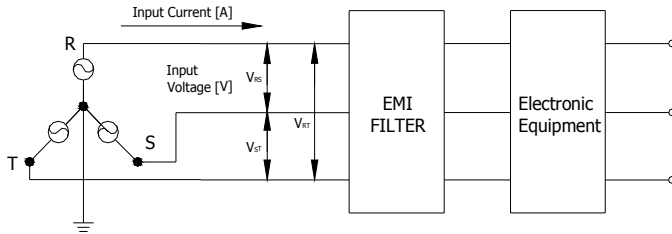
### 1-4. Recommended Clamping Torque

Screw	Torque	비고
M4	1.27N·m	
M5	2.50N·m	

## 2. ELECTRICAL CHARACTERISTICS

2-1. Rated Voltage : 3상, 250VAC or 500VAC

2-2. Rated Current



$$\text{Input Current [A]} = \frac{\text{Input Capacity of the Equipment [VA]}}{\text{Input Voltage [V]} \times \sqrt{3}}$$

$$\text{Rated Current [A]} \geq \text{Input Current [A]}$$

2-3. Withstand Voltage Test

AC 입, 출력과 접지간 절연내압이 AC 2500V에서 1분간 Current 100mA 이하이다.

2-4. Isolation Resistance Test

AC 입, 출력과 접지간 절연저항이 DC 500V에서 1분간 100MΩ이상이다.

2-5. Leakage Current Test

Input Voltage	Leakage Current	Note
0 ~ 250VAC	2.5mA Max	입력 전압 인가시 LINE-GND간 최대 누설전류량
251 ~ 500VAC	5.0mA Max	

## 3. ENVIRONMENT CONDITION

3-1. Operating Temperature Test

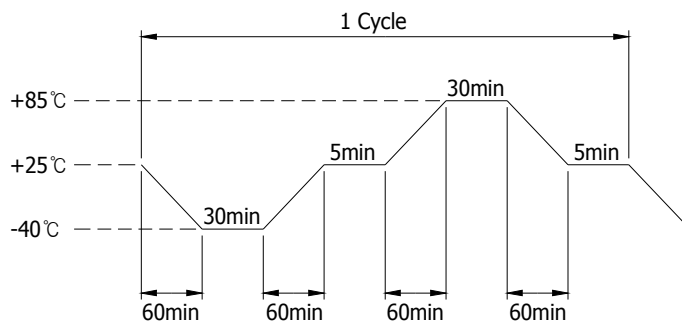
아래의 온, 습도에서 정격입출력 상태로 8시간 운영 시험에서 제반 전기적 특성 및 기구적 특성을 만족하여야 한다.

(1) 온도 : -25℃ ~ +85℃

(2) 상대습도 : 20 ~ 90% RH

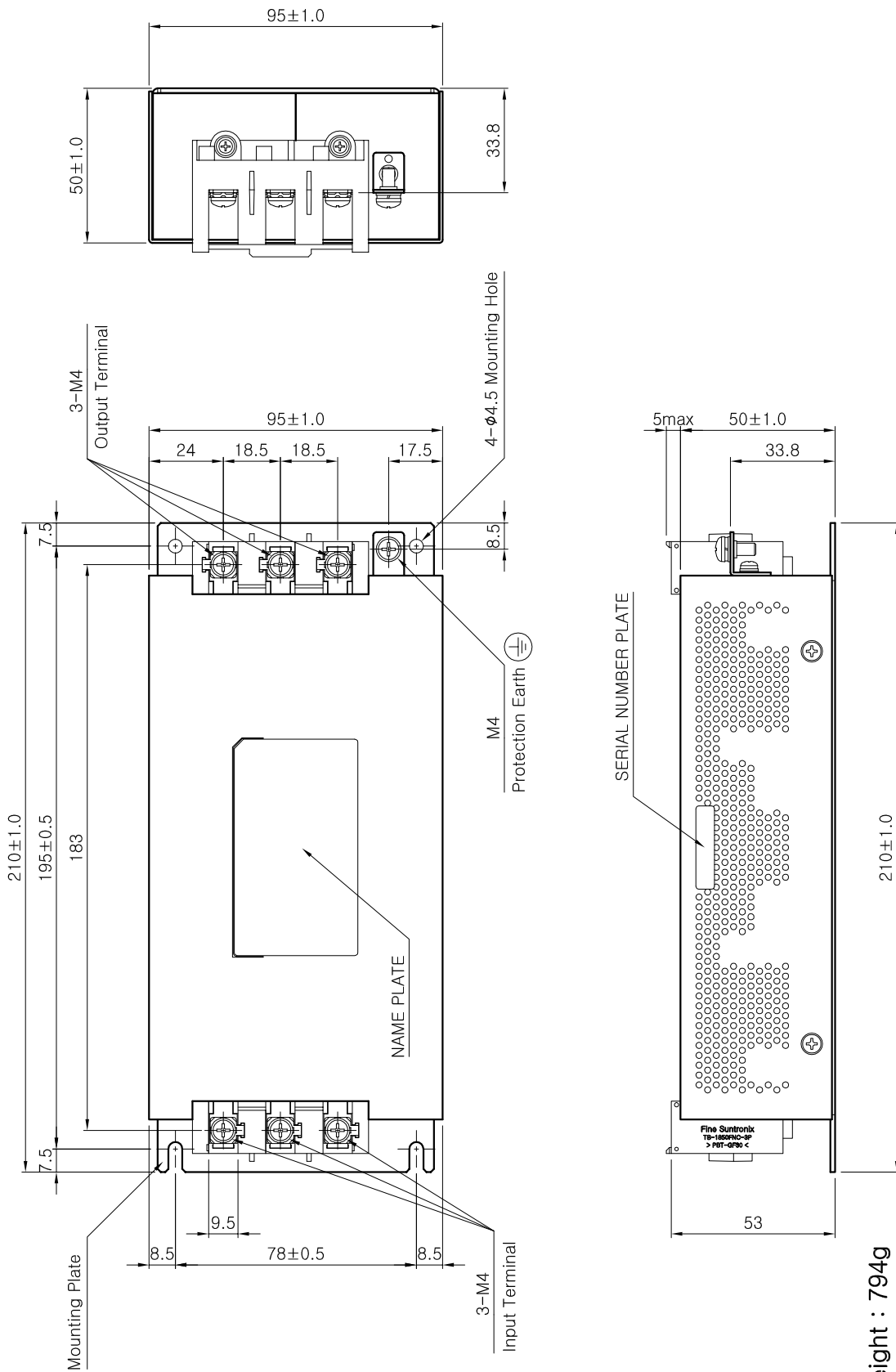
3-2. Heat Cycle Test

주위온도 -40℃ ~ +85℃에서 아래의 Cycle을 기준으로 50Cycle 후 제반 전기적 특성 및 기구적 특성을 만족하여야 한다.



# Dimension

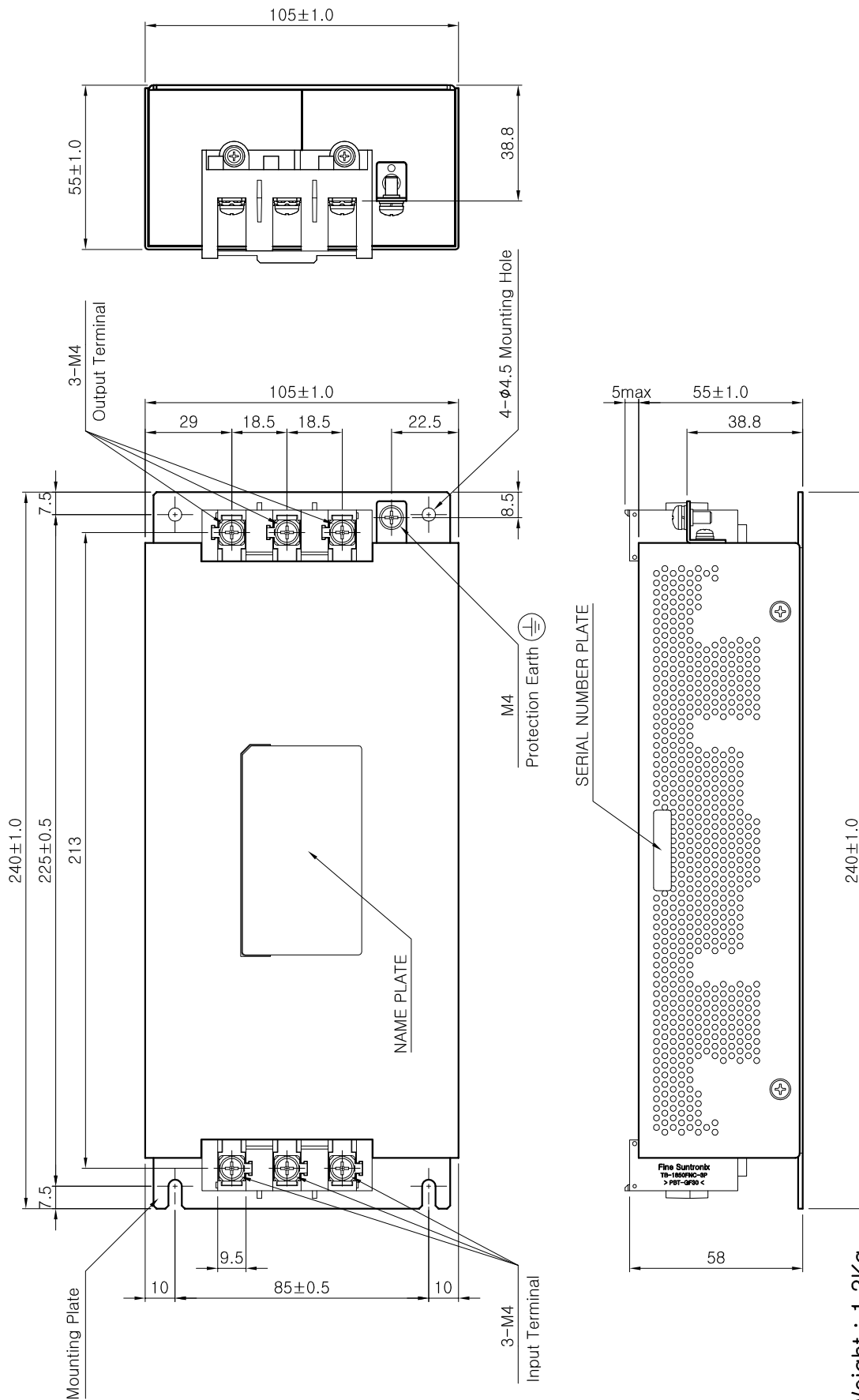
# TMS-2006/2010



- \* Weight : 794g
- \* Tolerance :  $\pm 1$
- \* Dimensions in mm

# Dimension

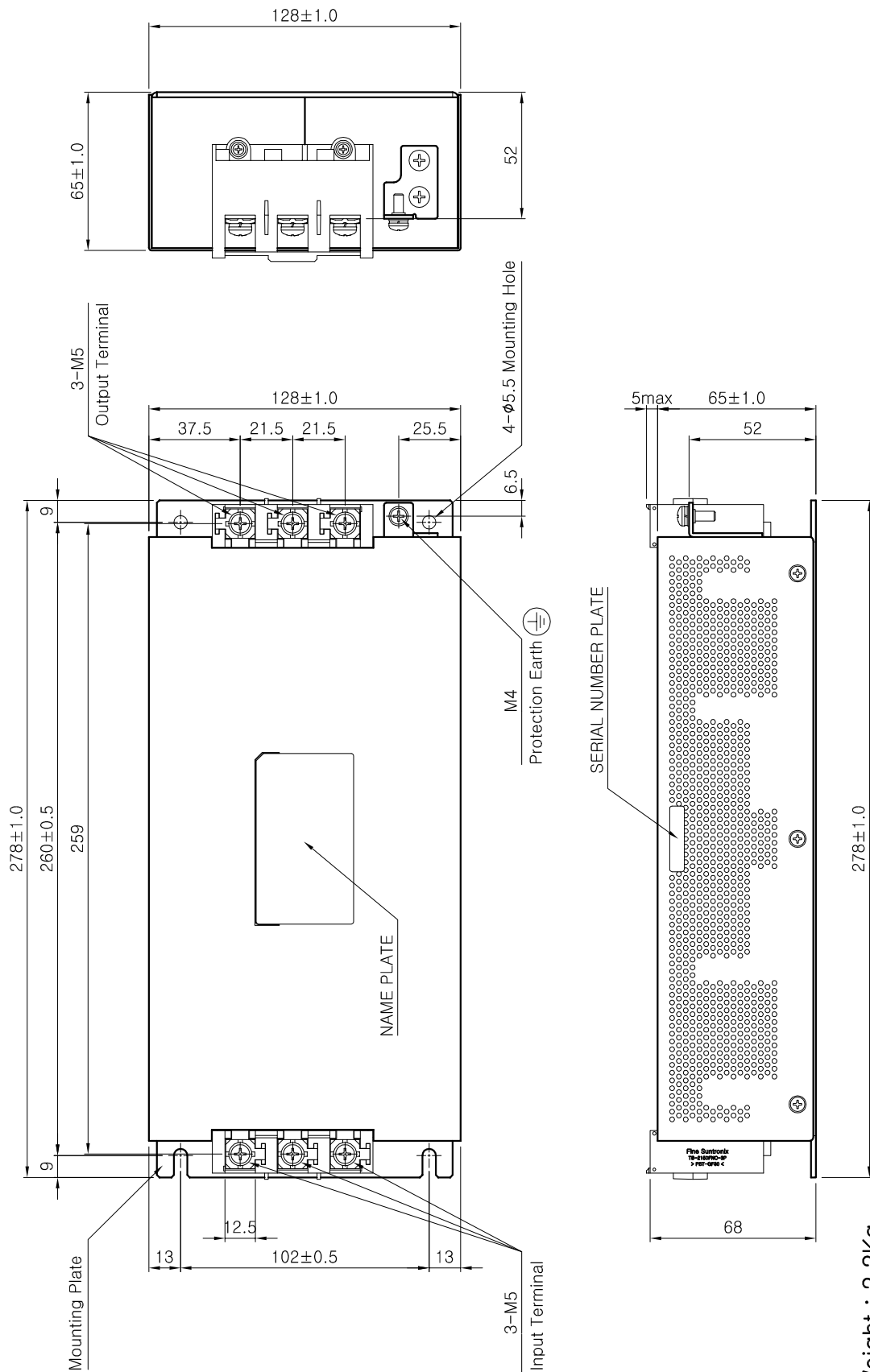
# TMS-2020/2030



- \* Weight : 1.3Kg
- \* Tolerance :  $\pm 1$
- \* Dimensions in mm

# Dimension

# TMS-2040/2050/2060



\* Weight : 2.2Kg

\* Tolerance :  $\pm 1$

\* Dimensions in mm



[www.orientelec.co.kr](http://www.orientelec.co.kr)

**Orient Electronics Inc.**

143-1, Sangdaewon-Dong, Jungwon-Gu, Seongnam-Si, Gyeonggi-Do, Korea

Head office & Factory

Telephone +82-31-737-0200 Telefax +82-31-737-0233

( )

143-1

: 031-737-0200

: 031-737-0233

**ORIENT** ELECTRONICS