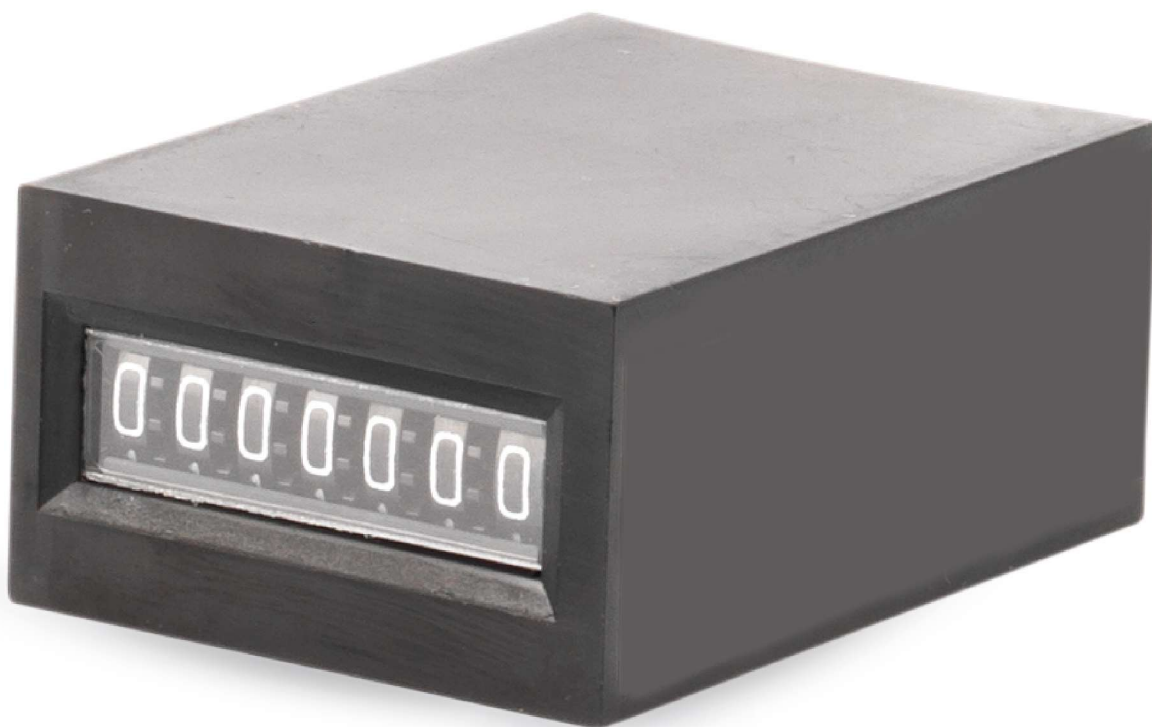


Impulse Counter Series CR 18


- 7-digit Compact Size
- High Accuracy and Reliability
- Requires no lubrication or maintenance
- Ideal where space is limitation
- Mounting options: Panel, PCB



Ordering Information

Cat. No.	Description
ED11A	12 V DC, Behind the panel (Screw mount)
ED11B	12 V DC, Behind the Panel With out Seal Hole (Screw mount)
ED22D	24 V DC, PCB mount (Straight)
ED23D	24 V DC, PCB mount (Right angle)
ED24C	24 V DC, Panel (Snap-in type)

Impulse Counter Series CR 18

Cat. No.	ED11A	ED11B	ED22D	ED23D	ED24C
Parameters					
Supply Voltage (\oplus)	12 V DC		24 V DC		
Supply Variation	-15% to +10%		$\pm 10\%$		-15% to +10%
Power Consumption (Max.)	1.2 W				
Figure	7 Digit, Black, 4.0 mm Height				
Maximum Range	99,99,999				
Operating Life	10,000,000 counts minimum				
Speed (Counts / Minute)	600 (50ms-ON / 50ms-OFF)		1200 (25ms-ON / 25ms-OFF)		600 (50ms-ON / 50ms-OFF)
Pulse Width (minimum)	50 ms		25 ms		50 ms
Connection	Lead wire with connector		Terminal PIN (Pitch : 10 mm)	Terminal PIN (Pitch : 3.80 mm)	Lead Wire
	#39-01-4031 #39-00-0039	# 03-09-2022 #02-09-2116			
Panel Cutout	N.A				1.20'(30.48) x 0.96'(24.38) Panel thickness - 0.04'(1.0) to 0.08'(2.0)
Protection for Housing	Tamper Proof housing	N.A			
Weight (unpacked)	142 g				
Operating Temperature	-5° C to +40° C (Non-Freezing)				
Humidity (Non Condensing)	45 to 85% (Rh)				
Display	0.12'(3.0) x 0.06' (1.6) - White & black background				
Continuous Energizing	Permissible				
Counting Method	One pulse - One count (energizing - ½ count, unenergized - ½ count)				
Reset	None				
Shock test	Endurance: 300 m/s ² (30g) XYZ 5 times each direction, Total : 3, Mismovement : 50 m/s ² (5g) XYZ 4 times each direction, Total : 24.				
Vibrations test	Endurance: 16.7 Hz, Width : 4mm ; XYZ each direction for 1 hour Mismovement : 10–55 Hz, Width : 0.5mm ; XYZ each direction for 10 mins				
Type of Mounting	Behind the panel (Screw mount)		PCB mount (Straight)	PCB mount(Right angle)	Panel (Snap-in type)
Degree of Protection	IP 30				
Construction	Cover : Plastic (Noryl UL94V-1), Black				
Approvals					

VIEWS OF DIFFERENT BEZELS



Behind the panel (Screw mount)



Housing Behind Panel with
Out Seal Hole (Screw mount)



PCB mount (Straight)



PCB mount (Right angle)

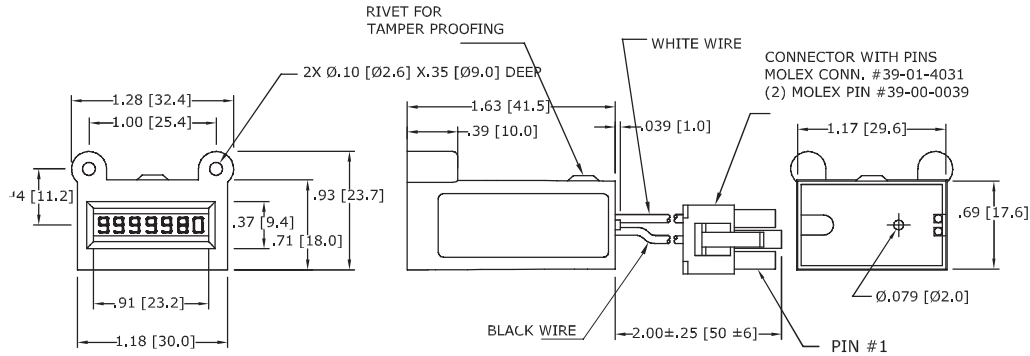


Panel (Snap-in type)

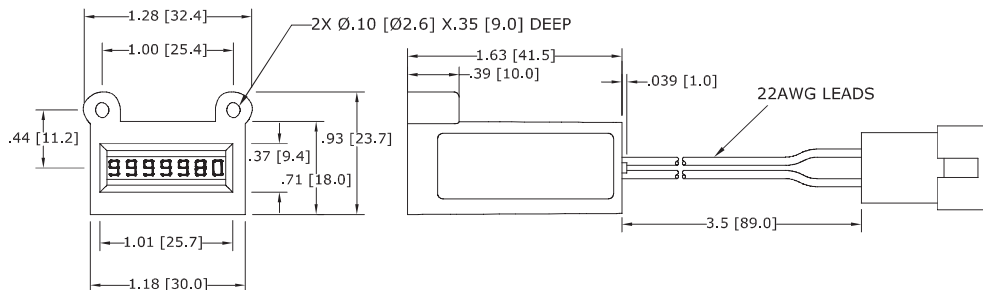
Impulse Counter Series CR 18

MOUNTING DIMENSION (mm)

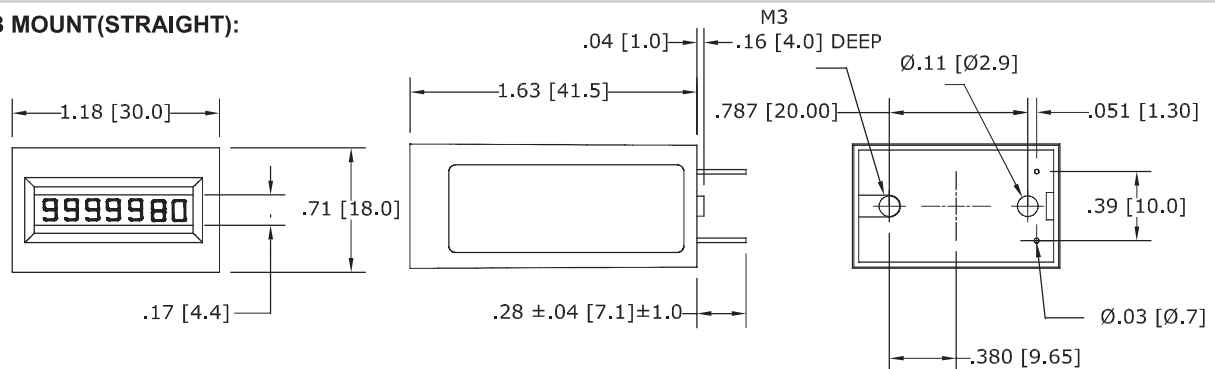
BEHIND THE PANEL (SCREW MOUNT):



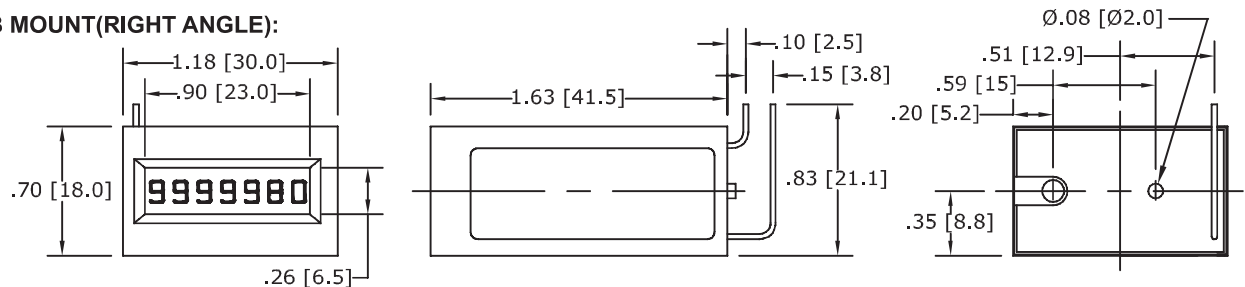
BEHIND THE PANEL (SCREW MOUNT):



PCB MOUNT(STRAIGHT):



PCB MOUNT(RIGHT ANGLE):



PANEL (SNAP-IN TYPE):

