

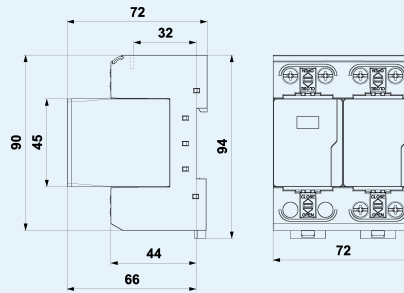
# FLP-B+C MAXI V/1+1

pluggable module, visual fault signalling, module locking

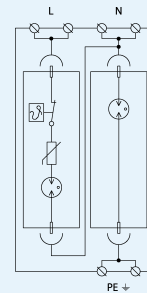
- combination of high performance lightning current arrester and encapsulated efficiency spark gap, connected in the 1+1 mode
- installation at the boundary of zones LPZ 0 and LPZ 1 or higher, mainly to main distribution boards
- for protection against impact of direct or indirect lightning strikes in wide range of applications with single-phase power supply, resp. to sub-distribution boards in large buildings



Product dimensions



Basic circuit diagram



## Technical parameters

Parameter name	Parameter value
Type of SPD	T1,T2
Mounting	DIN rail 35 mm
Nominal voltage	$U_n$ 230 V AC
Maximum operating voltage L-N	$U_c$ 260.00 V AC
Maximum operating voltage N-PE	$U_c$ 255.00 V AC
Nominal load current for "V" connection	$I_L$ 125 A
Type of network	TT
Maximum overcurrent protection	250 A gL/gG
Maximum overcurrent protection for "V" connection	125 A gL/gG
Short-circuit current rating	$I_{SCCR}$ 50.0 kA
Total discharge current (10/350 $\mu$ s)	$I_{Total(10/350)}$ 50.00 kA
Lightning impulse current (10/350 $\mu$ s) L-N	$I_{imp}$ 25.00 kA
Lightning impulse current (10/350 $\mu$ s) N-PE	$I_{imp}$ 50.00 kA
Nominal discharge current (8/20 $\mu$ s) L-N	$I_n$ 30.00 kA

Nominal discharge current (8/20 $\mu$ s) N-PE	$I_n$	50.00 kA
Maximum discharge current (8/20 $\mu$ s) L-N	$I_{max}$	60.00 kA
Maximum discharge current (8/20 $\mu$ s) N-PE	$I_{max}$	100.00 kA
Voltage protection level mode L-N	$U_p$	1.50 kV
Voltage protection level mode L-PE	$U_p$	2.20 kV
Voltage protection level mode N-PE	$U_p$	1.50 kV
Residual voltage of MOV at In	$U_{RES}$	0.85 kV
Ability to independently switch off the following current N-PE	$I_{fi}$	0.1 kA
Response time L-N	$t_a$	100 ns
Response time N-PE	$t_a$	100 ns
TOV 5 s L-N		335 V
TOV characteristic (TOV 5 s)		withstand
TOV 120 min L-N		440 V
TOV characteristic (120 min)		withstand
TOV 200 ms N-PE		1 200 V
TOV characteristic (TOV 200 ms)		withstand
Cross-section of connected conductors solid (min)		2.50 mm <sup>2</sup>
Cross-section of connected conductors solid (max)		50.00 mm <sup>2</sup>
Cross-section of connected conductors stranded (min)		2.50 mm <sup>2</sup>
Cross-section of connected conductors stranded (max)		35.00 mm <sup>2</sup>
Fault indication L-N		red indication field
Fault indication N-PE		no
Degree of protection		IP 20
Range of ambient temperatures (min/max)		-40 / 80 °C
Humidity		5 - 95 %
According to standard		EN 61643-11:2012, IEC 61643-11:2011
ETIM Class		EC001457
Plug module		FLP-B+C MAXI V/0 FLP-A50N V/0
Customs tariff number		85363090
EAN		8595090550952