

2/2 Way Valve (Magnalift)

Model : NKV Series



Features

- Normally closed
- Body : Brass
- 7000 sleeve assembled
- Coil : All of 7000 sleeve coil available
- Operated on nearly Zero MOPD
- Air, Water, Inert gas, Oil and Steam applicapable
- Applied Seal : FKM, NBR, EPDM
- Body thread type : NPT, PF available with factory consult

Specification

Major material features

- Body -Brass
- Seal -FKM,EPDM ,NBR
- Sleeve - StSt 303 ,7000

Rated Voltage & Power Consumption

- Please refer to table #1
on the back side

Respons time

- Open / Close time : 80 ~ 100 ms

Ambient temperature

- 0 ~ 50°C

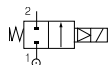
Fluid temperature

- 60°C Water & Air (NBR)
- 100°C Oil (FKM)
- 140°C Steam (EPDM)

Port size Rc (PT)

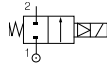
- 1/2", 3/4", 1"
(PF/NPT, Factory Consulting)

Normally closed ,Air,Water, Oil ,Steam



REFERENCE NO.				PORT SIZE (PT) Thread	ORIFICE (mm)	FLOW (L/MIN) (L/min) Liquids KV	ADMISSIBLE DIFF. PRESSURE (BAR)			MAX. FLUID TEMP.(°C)		SEAL	Power (W)	
VESSEL NO.	HOUSING	COIL					Min	Max		Water	Oil		DC	AC
		Gobal	Korea					DC	AC					
NKV10N	I	-	1K	3/8"	15	40	0	-	10	60	-	NBR	14	10
	2995	481865	-					-	10	60	-		9	8
	4270	481000	-					-	10	60	-		8	8
	4270	486265	-					7	10	60	-		14	14
	H	-	1F					-	10	60	-		8	8
	H	-	1H					7	10	60	-		14	14
NKV10F	2995	481865	-	3/8"	15	40	0	-	10	60	100	FKM	9	8
	4270	481000	-					-	10	60	100		8	8
	4270	486265	-					7	10	60	100		14	14
	H	-	1F					-	10	60	100		8	8
	H	-	1H					7	10	60	100		14	14
NKV15N	I	-	1K	1/2"	15	50	0	-	10	60	-	NBR	14	10
	2995	481865	-					-	10	60	-		9	8
	4270	481000	-					-	10	60	-		8	8
	4270	486265	-					7	10	60	-		14	14
	H	-	1F					-	10	60	-		8	8
	H	-	1H					7	10	60	-		14	14
NKV15F	2995	481865	-	1/2"	15	50	0	-	10	60	100	FKM	9	8
	4270	481000	-					-	10	60	100		8	8
	4270	486265	-					7	10	60	100		14	14
	H	-	1F					-	10	60	100		8	8
	H	-	1H					7	10	60	100		14	14
NKV20N	I	-	1K	3/4"	24	90	0	-	10	60	-	NBR	14	10
	2995	481865	-					-	10	60	-		9	8
	4270	481000	-					-	10	60	-		8	8
	4270	486265	-					7	10	60	-		14	14
	H	-	1F					-	10	60	-		8	8
	H	-	1H					7	10	60	-		14	14
NKV20F	2995	481865	-	3/4"	24	90	0	-	10	60	100	FKM	9	8
	4270	481000	-					-	10	60	100		8	8
	4270	486265	-					7	10	60	100		14	14
	H	-	1F					-	10	60	100		8	8
	H	-	1H					7	10	60	100		14	14
NKV25N	I	-	1K	1"	27	120	0	-	10	60	-	NBR	14	10
	2995	481865	-					-	10	60	-		9	8
	4270	481000	-					-	10	60	-		8	8
	4270	486265	-					7	10	60	-		14	14
	H	-	1F					-	10	60	-		8	8
	H	-	1H					7	10	60	-		14	14
NKV25F	2995	481865	-	1"	27	120	0	-	10	60	100	FKM	9	8
	4270	481000	-					-	10	60	100		8	8
	4270	486265	-					7	10	60	100		14	14
	H	-	1F					-	10	60	100		8	8
	H	-	1H					7	10	60	100		14	14

Normally Closed, Steam application



REFERENCE NO.				PORT SIZE (PT) Thread	ORIFICE (mm)	FLOW (L/MIN) (L / min) Liquids kv	ADMISSIBLE DIFF. PRESSURE (BAR)			MAX. FLUID TEMP. (°C)		SEAL	Power (W)	
VESSEL NO.	HOUSING	COIL					Min	Max		WATER	STEAM		DC	AC
		Gobal	Korea					DC	AC					
NKV10E	I	-	1K	3/8"	15	40	0	-	10	80	-	EPDM	14	10
	2995	481865	481865					-	10	80	-		9	8
	4270	481000	1F					-	10	80	-		8	8
	4270	486265	-					7	10	80	-		14	14
	4270	486265	-					4	4	80	140		14	14
	H	-	1H					7	10	80	-		14	14
	H	-	1H					4	4	80	140		14	14
NKV15E	I	-	1K	1/2"	15	50	0	-	10	80	-	EPDM	14	10
	2995	481865	481865					-	10	80	-		9	8
	4270	481000	1F					-	10	80	-		8	8
	4270	486265	-					7	10	80	-		14	14
	4270	486265	-					4	4	80	140		14	14
	H	-	1H					7	10	80	-		14	14
	H	-	1H					4	4	80	140		14	14
NKV20E	I	-	1K	3/4"	24	90	0	-	10	80	-	EPDM	14	10
	2995	481865	481865					-	10	80	-		9	8
	4270	481000	1F					-	10	80	-		8	8
	4270	486265	-					7	10	80	-		14	14
	4270	486265	-					4	4	80	140		14	14
	H	-	1H					7	10	80	-		14	14
	H	-	1H					4	4	80	140		14	14
NKV25E	I	-	1K	1"	27	120	0	-	10	80	-	EPDM	14	10
	2995	481865	481865					-	10	80	-		9	8
	4270	481000	1F					-	10	80	-		8	8
	4270	486265	-					7	10	80	-		14	14
	4270	486265	-					4	4	80	140		14	14
	H	-	1H					7	10	80	-		14	14
	H	-	1H					4	4	80	140		14	14

Dimensions

NKV Series

(Unit : mm)

Series(Fitting size)	Dimension		
	A	B	C
NKV 3/8"	72	100	85
NKV 1/2"	72	100	85
NKV 3/4"	84	108	90
NKV 1"	95	118	95

H-1F / H-1H

Coil G-200146("F" Class)
G-200148("H" Class)

Enclosure Housing(G-200140)

(Unit : mm)

Rated Voltage & Power Consumption

(Table #1)

Code	Volts / Hz	Watt	Coil
C1	DC12	14	H-1H
C2	DC24		
A2	24/50	8	H-1F
B2	24/50		
6J	110/60, 115/60		
0A	110/50, 115/50		
4K	220/60, 240/60		
3A	220/50, 230/50		
A2	24/50	14	H-1H
OP	100/50, 115/60		
A5	110/50		
B7	220/60		
S2	200/50, 230/60		
A7	220/50		

How to Order

NKV 15 N-H-1F-C1

- ①
- ②
- ③
- ④
- ⑤

<ul style="list-style-type: none"> ① Valve series ② Port size <ul style="list-style-type: none"> 10 PT3/8" 15 PT1/2" 20 PT 3/4" 25 PT1" ③ Seal material <ul style="list-style-type: none"> N NBR F FKM E EPDM 	<ul style="list-style-type: none"> ④ Enclosure & Coil <ul style="list-style-type: none"> H-1F 1/2" PF Conduit 8 Watt, "F" Class H-1H 1/2" PF Conduit 14 Watt, "H" Class ⑤ Rated voltage code See Table #1
---	--