

GAS SOLENOID VALVE
(Normally Closed, The Fast Opening and Fast Closing type)

HDG 2006 / 2008 / 2010E / 2015B / 2015C / 2015 / 2025 / 2040 / 2050

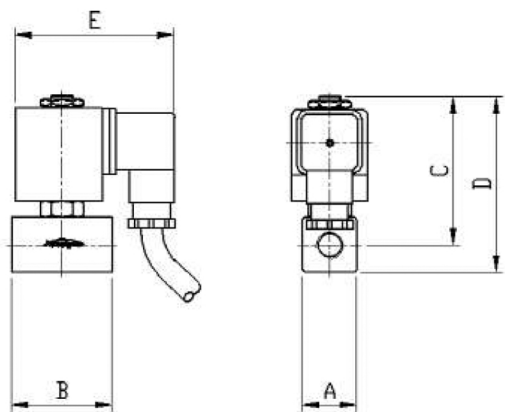
HDG 2050F / 2065F / 2080F / 2100F



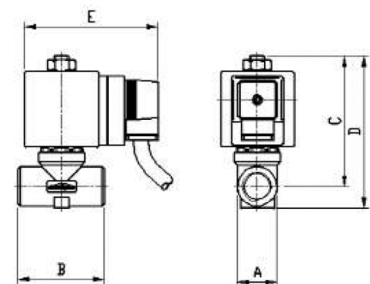
According to LVD 2006/95/EC

test required IEC 60730-1 (4th Edi.): 2010 / IEC 60730-2-15 (2th Edi.): 2008

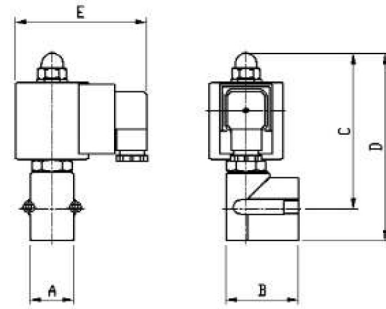
HDG 2006 / 2008



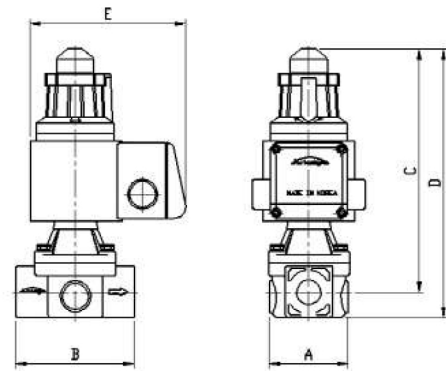
HDG 2015B / 2015C



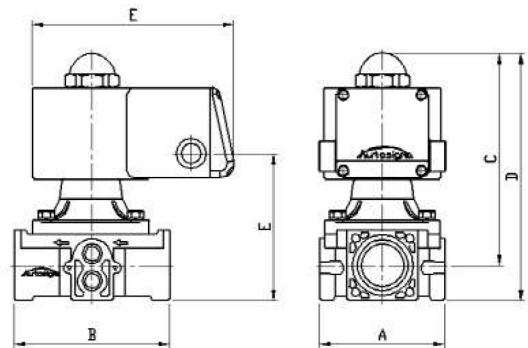
HDG 2010E



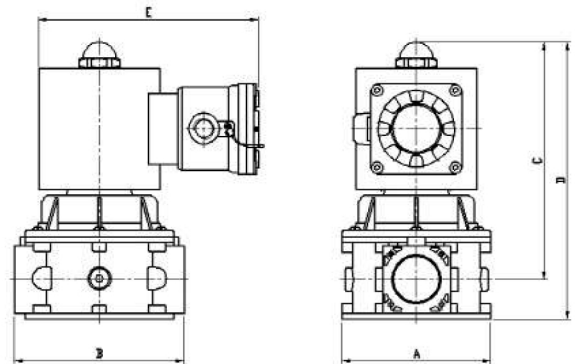
HDG 2015



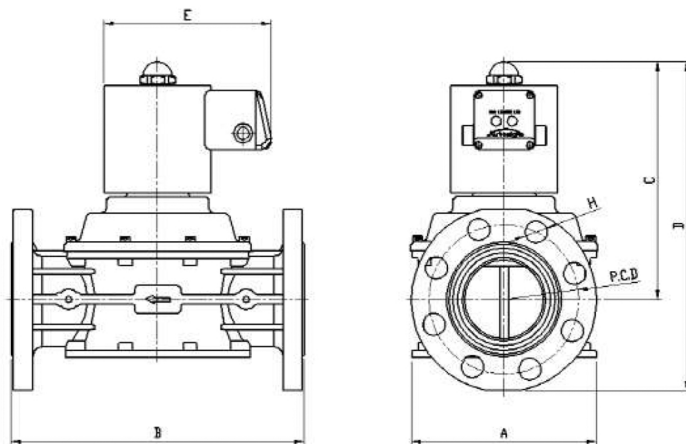
HDG 2025



HDG 2040 / 2050

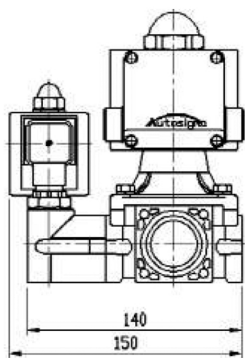


HDG 2065F / 2080F / 2100F



COMBINATION

HDG 2010E / HDG 2025



HDG 2040 / HGT 2000



DIMENSION & TECHNICAL SPECIFICATION

MODEL	Overall (mm)						Weight (Kg)	Connection	Connection (mbar)	Powwer consumption
	A	B	C	D	E	H				
HDG 2006 (6A)	25	45	62	75	92	-	0.8	Rp 1/4"	360	18VA
HDG 2008 (8A)	25	45	62	75	92	-	0.8	Rp 1/4"	360	18VA
HDG 2010E	41	51.5	114	128	90	-	0.7	-	360	18VA
HDG 2015B (15A)	32	60	80	95	73	-	1	Rp 1/2"	360	20VA
HDG 2015C (15A)	32	60	80	95	73	-	1	Rp 1/2"	360	20VA
HDG 2015 (15A)	56	84	130	148	111	-	1.8	Rp 1/2"	360	20VA
HDG 2025 (25A)	88	110	150	175	143	-	2.7	Rp 1"	360	30VA
HDG 2040 (40A)	140	160	175	213	161	-	7	Rp 1" 1/2	360	72VA / 20VA*
HDG 2050 (50A)	140	160	175	213	161	-	7	Rp 2"	360	72VA / 20VA*
HDG 2050F (50A)	145	227	175	250	161	4x18	7	DN 50	200	72VA / 20VA*
HDG 2065F (65A)	187	270	223	313	178	4x18	14.5	DN 65	200	72VA / 53VA*
HDG 2080F (80A)	198	313	255	353	178	8x18	14.5	DN 80	200	190VA / 53VA*
HDG 2100F (100A)	198	316	282	390	178	8x18	14.5	DN 100	200	190VA / 53VA*

HDG - Stroke Fixing / HDG2015C - Stroke Adjustment

*Starting / Working

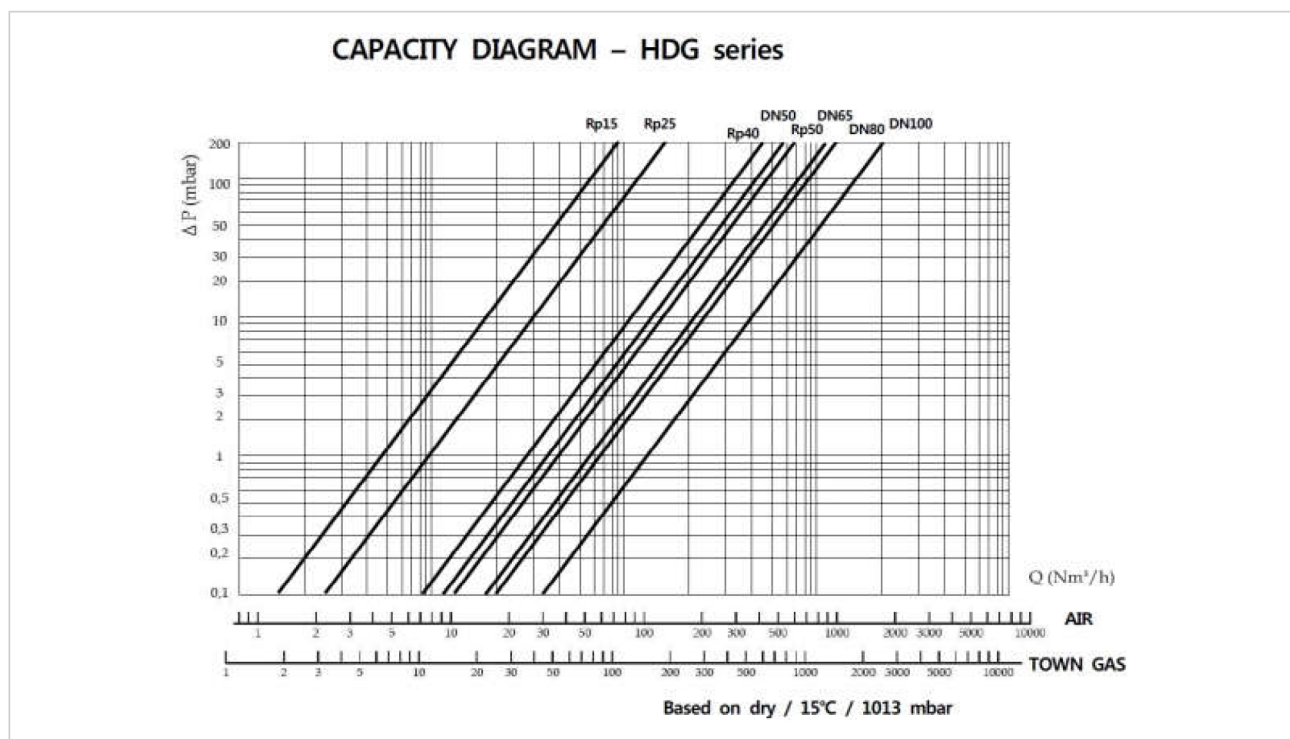
HDG2010E - Auxiliary valve in combination with other valves

GENERAL SPECIFICATION

Working gas	LNG(Town gas), LPG, Air, Flue gas, Non-aggressive gas
Working voltage	AC 220V
Ambient temperature	-15 ~ 60 °C
Voltage tolerance	-15 ~ 10 %
Closing time	< 1 second
Opening time	< 1 second
Protection grade	IP 54 5- Dust protected. 4- Protection against splashing water

MATERIALS

Housing base	Aluminium diecast, Brass
Coil housing	Iron
Coil	enameled copper wires
Disk sheet	HNBR
Core	Pure Iron



■ TECHNICAL DESCRIPTION

- HDG Series solenoid valves are fast opening single-stage valves directly act as the power held within one second, normally closed.
- If the power supply is shut off, the valve rapidly closes, interrupting the flow of gas. (within 1 second)
- This is suitable for air or gas blocking and releasing controls, required in gas power burners, atmospheric gas boilers, industrial kilns and other gas consuming appliances.

SAVING ENERGY

: HDG-EX 2040 / 2050 / 2050F / 2065F / 2080F / 2100F

- The starting power is being supplied to the solenoid coil and after 20 seconds it is down to 40% power to operate the solenoid coil, saving electricity.
- Keeping the temperature of the coil below 55 °C can prolong the lifetime of the product.
- Signal lamps on the front terminal box. If the starting power is applied, the red lamp is turn on. And red lamp is reduced to 40% of operating power and changes to green after 20 seconds.
- Red warning light will be turned on and power will be turned off if there is a problem in solenoid coil's operation.
- If problems occur in the operation of the solenoid coil it must be immediately exchanged.

■ ATTENTION

All installation/maintenance work must be carried out by skilled staff. Always check that the system is gas-tight after installation.

Failure to follow this manual can result in dangerous situations or damage to the product.

■ INSTALLATION

1. Warning

- For proper and safe operation and long service life of the valve, consider the following recommendations of the valve during the design of the system when the valve is installed

- Rated voltage and current
- The degree of protection vessel
- Dimensions of tolerance parallel thread
- Attachment Method
- The environment
- Pull method
- Location inlet section
- Using leased lines

- Shut off the air/gas supply at the main manual shut-off valve and disconnect electrical power to the valve before proceeding with installation or servicing.

- Before installation, be sure that the pipeline is free from impurities and vibration-free.

- Solenoid surface may be hot. Do not touch it with bare hands.

- The filter must be installed upstream of the solenoid valve for proper operation.

- Avoid excessive quantities of sealing agent which could enter in the valve.

- Use proper tools only and avoid overtightening.

- Make sure all gaskets are used properly.

- Please be sure protective measures to prevent easy access to the facilities.

- If you do not use the Rated voltage products can cause serious malfunction.

- After installation, function and leaking tests must be carried out.

- Perform maintenance must be done at least once a year.

2. Installation Location

- Valve may be mounted with coil in horizontal or vertical position, not upside down.

- A gas filter should be always installed upstream the valve.

- Ensure that installing area is protected from rain or moisture and sunlight

- It may cause the heat to the coil according to the installation environment. Don't install the valve in a position close to the wall or another device.

■ Standards and specifications of this product are subject to change without prior notice for improved performance.

ISO 9001 : 2008
ISO 14001 : 2004

INNOBIZ
기술혁신영웅기업

CE

CS

Company : HYOSHIN MECHATRONICS CO.,LTD CEO : Song Taek Beon
Address : #305, 323 Y-Zenithpark, Bucheon-ro, Wonmi-gu, Bucheon-si, Gyeonggi-do, Korea
Tel : +82-32-678-6200 Fax : +82-32-672-6401 E-mail : info@hyoshin.co.kr
Copyright © 2016 HYOSHIN MECHATRONICS CO.,LTD Rights Reserved.