

Series SHF · SHS

Hand Valves

- SN
- SP2000
- SP4000
- SQ
- SC
- SP
- SHF · SHS**
- DC
- SQ2
- ST
- SF

Hand Valves



Features

- THIS PRODUCT SWITCHES COMPRESSED AIR ON/OFF OF AIR PRESSURE DEVICES BY SIMPLY TURNING THE HANDLE
- MAINTENANCE OR INSPECTION IS POSSIBLE WHEN THE REMAINING PRESSURE IN THE DEVICE IS REMOVED
- A THREE-WAY VALVE DISCHARGES THE REMAINING PRESSURE OUT, AND BLOCKS THE INCOMING AIR

How to Order

SHF 10 - 10

1

2

1 Model
SHF

2 Applicable Tube O. D.
06 : Ø6
08 : Ø8
10 : Ø10
12 : Ø12

SHS M5

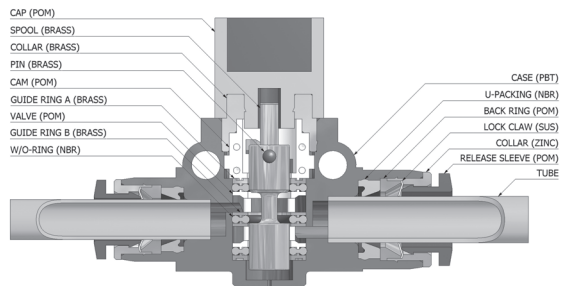
1

2

1 Model
SHS

2 Port Size
M5 : M5 x 0.8
01 : R 1/8
02 : R 1/4
03 : R 3/8
04 : R 1/2
06 : R 3/4

Structural Diagram

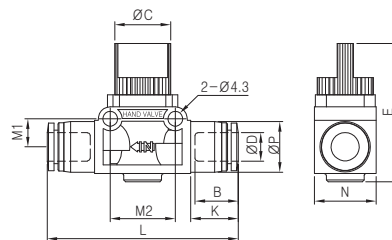


Standard Specifications

Fluid Type	Air
Max. Operating Pressure	0~150psi (0~9.9kgf/cm ²)
Ambient and Fluid Temperature	0~60 °C
Applicable Tube O.D	Ø4, Ø6, Ø8, Ø10, Ø12

Series SHF · SHS

SHF-00

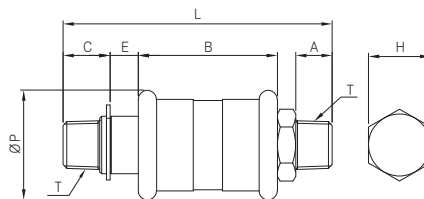


METRIC-BSPT(R)

Unit : mm

MODEL	ØD (Tube Size)	ØP	B	K	L	E	N	M1	M2	ØC	Weight (g)
SHF 06-06	6	12.5	16.4	12.3	52.6	40.3	18.0	8.2	19.0	16.3	27.0
SHF 08-08	8	14.8	18.7	13.9	55.8	40.3	18.0	8.2	19.0	16.3	28.0
SHF 10-10	10	17.5	20.1	14.4	61.8	40.5	21.2	10.9	24.0	19.3	42.0
SHF 12-12	12	20.5	22.8	17.6	68.2	40.5	21.2	10.9	24.0	19.3	47.0

SHS



METRIC-BSPT(R)

Unit : mm

MODEL	ØP	T	L	E	C	A	B	H (Hex.)	Weight (g)
SHS050-M5	19.0	M5×0.8	45.0	6.0	7.0	4.1	23.0	9	24.0
SHS100-01	24.0	R 1/8	54.0	7.2	10.8	8.0	24.0	14	45.0
SHS200-02	30.0	R 1/4	73.5	7.7	12.8	10.0	38.0	17	112.0
SHS300-03	41.0	R 3/8	83.0	8.0	14.0	11.0	44.0	27	276.0
SHS400-04	41.0	R 1/2	89.0	8.0	17.0	14.0	44.0	27	270.0
SHS500-06	49.0	R 3/4	104.5	12.5	18.0	15.0	48.0	32	407.0