

SAFETY PATTERN PRESSURE GAUGE
ALUMINIUM CASE, MODEL : P339 SERIES
PHENOLIC CASE, MODEL : P359 SERIES

WISE®

SERVICE INTENDED

The P339 & P359 series are widely used in industries such as fossil, nuclear, aerospace and marine. These gauge cases feature an integral wall between the measuring element and the window and a pressure relieving back for increased safety.

NOMINAL DIAMETER

125mm

ACCURACY

±0.5% and ±1.0% of Full Scale

SCALE RANGE

-76cmHg ~ 0 to 0 ~ 2000kgf/cm²

WORKING PRESSURE

Steady : 75% of Full Scale

Over Range Protection : 130% of Full Scale

WORKING TEMPERATURE

Ambient : -20 ~ 65°C

Fluid : +200°C maximum



Standard Features

PRESSURE CONNECTION

316SS

ELEMENT

316SS

<150kgf/cm² : C Type Bourdon Tube

≥150kgf/cm² : Helical Type Bourdon Tube

CASE & COVER

Phenolic Resin (P359) and

Black Finished Aluminium (P339)

WINDOW

Glass

MOVEMENT

304SS

DIAL

White Aluminium with Black Graduations

POINTER

PBs2 alloy, Black painted

CONNECTION

3/8, 1/2 PT, NPT & PF

ORDERING INFORMATION

BASE MODEL

P339 : SAFETY PATTERN PRESSURE GAUGE, ALUMINIUM CASE

P359 : SAFETY PATTERN PRESSURE GAUGE, PHENOLIC CASE

NOMINAL DIAMETER

5 : 125mm

MOUNTING TYPE (Refer to Mounting type & Dimension)

B : Bottom Connection, Surface, Case Mounting Plate

ACCURACY

3 : ±1.0% of Full Scale.

2 : ±0.5% of Full Scale.

CONNECTION

D : 3/8"

E : 1/2"

CONNECTION TYPE

B : PF

C : PT

D : NPT

UNIT

B : kgf/cm² (Pressure) or cmHg + kgf/cm² (Compound)

C : cmHg, Only available with vacuum gauge

Z : Other

RANGE

Refer to Pressure Range Table

DIAL COLOR

3 : 2 Colors

Z : 3 Colors, Available with Compound and Vacuum gauges

OPTIONS

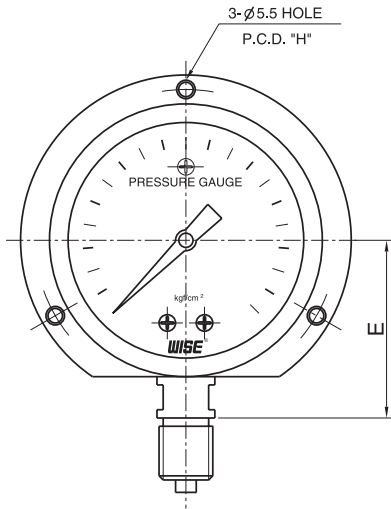
0 : None

1 : Accessories

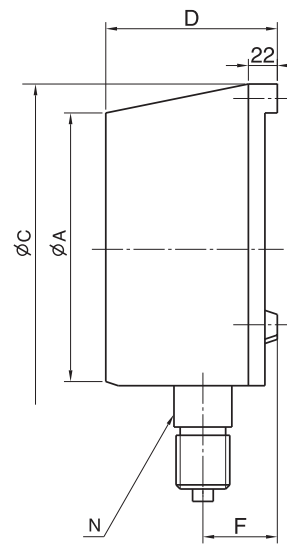
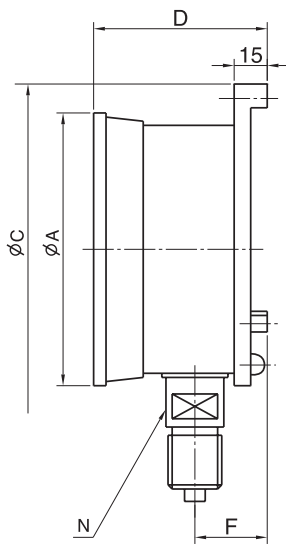
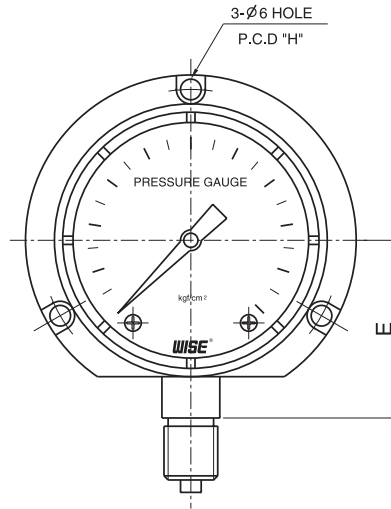
P339	5	B	3	E	C	B	032	7	0	SAMPLE MODEL NUMBER
------	---	---	---	---	---	---	-----	---	---	---------------------

P339, P359 : TYPE OF MOUNTING

CODE B



CODE B*



Dimensions (mm)

DIAL SIZE	AVAILABLE CODE	A	C	D	E	F	H	N
125	P339 B	128	152	73	94	32.5	138	17
	P359 B*	130	149	79	84	40.3	136	22

PRESSURE RANGE TABLE

	SCALE (kg/cm ²)	ACCURACY		ORDER CODE
		±0.5%	±1.0%	
VACUUM GAUGE	-76cmHg~0	○	○	026
PRESSURE GAUGE	0~0.5	×	○	040
	0~1	○	○	041
	0~2	○	○	042
	0~3	○	○	043
	0~4	○	○	044
	0~6	○	○	045
	0~10	○	○	047
	0~15	○	○	050
	0~20	○	○	051
	0~25	○	○	052
	0~35	○	○	054
	0~50	○	○	055
	0~70	○	○	057
	0~100	○	○	058
	0~150	○	○	059
	0~250	○	○	062
	0~350	○	○	064
	0~500	○	○	066
	0~700	○	○	068
	0~1000	○	○	070
0~2000	×	○	075	
COMPOUND GAUGE	-76cmHg~1	×	○	027
	-76cmHg~2	×	○	028
	-76cmHg~3	×	○	029
	-76cmHg~4	×	○	030
	-76cmHg~6	×	○	031
	-76cmHg~10	×	○	032
	-76cmHg~15	×	○	033
	-76cmHg~20	×	○	034

○ : AVAILABLE × : NOT AVAILABLE