

Ultra high purity pressure gauge with transmitter

Model: PT840 series

Spec. sheet no. PD08-05

Service intended

PT840 series are specially designed for the ultra-high purity gas distribution system used in a semiconductor, electronic, medical, biotechnology and pharmaceutical industry.



Nominal diameter

50 mm (2")

Gauge accuracy

±1.0% of full scale

Transmitter accuracy

±0.25% of full scale

Scale range

Refer to range code

Working pressure

Steady pressure : 75% of full scale value

Fluctuating pressure : 67% of full scale value

Working temperature

Ambient : -40 ~ 65°C

Fluid : Max. 100°C

Temperature effect

Accuracy at temperature above and below the reference temperature (20°C) will be effected by approximately ±0.4% per 10°C of full scale



Standard features

Mechanical

Pressure connection

Type 316L stainless steel electropolished
low mount or center back mount

surface finish $Ra \leq 0.25 \mu m$

- 1/4" NPT male thread
- VCR® male or female face seal fitting

Pressure element

Type 316L stainless steel

<6 MPa : C-type bourdon tube

≥6 MPa : Helical type bourdon tube

Case

Type 304 stainless steel

Electropolished with pressure relief

Movement

Stainless steel

Dial

White PVC with pointer stop pin

With black/red lettering, dual pressure scale (bar/psi)

Pointer

Black painted aluminium alloy

Ring and window

Twist-lock polycarbonate

Helium leak rate

Tested to confirm leakage rates of less than

10^{-9} mbar • l /sec

Electrical

Connection

26 AWG, Teflon insulated

10 feet leads (2 black wires)

Power

DC 24 V

Out put

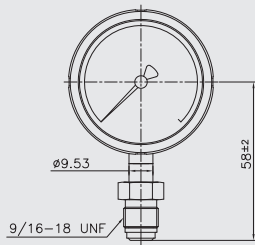
4 ~ 20 mA, 2 wire system

1. Base model**PT840** Ultra high purity pressure gauge with transmitter**2. Nominal diameter****1** 50 mm (2")**3. Type of mounting****A** Low mount (LM)**4. Accuracy****3** 1.0 class**5. Connection type****CD** ¼" NPT (male)**SF** Swivel female face seal**SM** Swivel male face seal**6. Unit****H** bar**I** MPa**7. Range****048** 0 ~ 11 bar**016** -1 ~ 11 bar**012** -1 ~ 7 bar**009** -1 ~ 4 bar**8. Pressure connection material and dial color****4** 316L SS and 2 colors**8** 316L SS and 3 colors**9. Options****0** Standard**1** Accessories

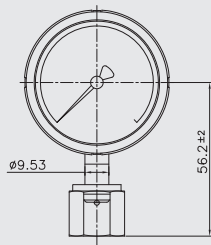
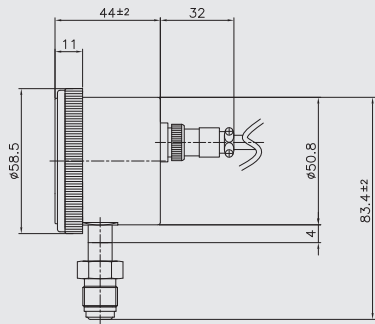
1	2	3	4	5	6	7	8	9
PT840	1	A	3	CD	H	XXX	4	0

Sample
ordering code

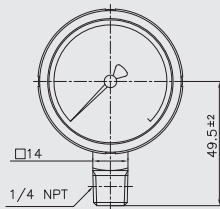
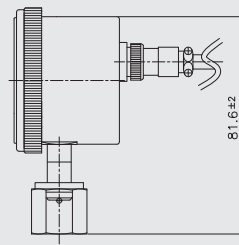
PT840 : Type of mounting



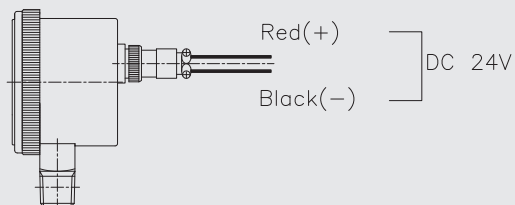
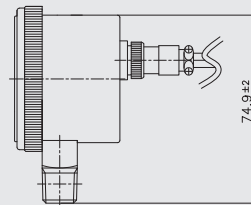
Swivel male



Swivel female



NPT male



Wire connection

A large empty rectangular box with a thin black border, intended for writing a memo.