

SF (FLEXIBLE) Series

5/2, 5/3, 3/2 Solenoid, Pneumatic Valve

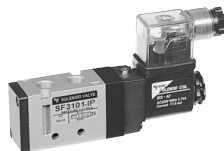
CHAPTER 03



SF1000
Body Width-15mm
Thread-M5



SF2000
Body Width-18mm
Thread-1/8



SF3000
Body Width-23mm
Thread-1/8



SF4000
Body Width-26mm
Thread-1/4



SF5000
Body Width-32mm
Thread-3/8



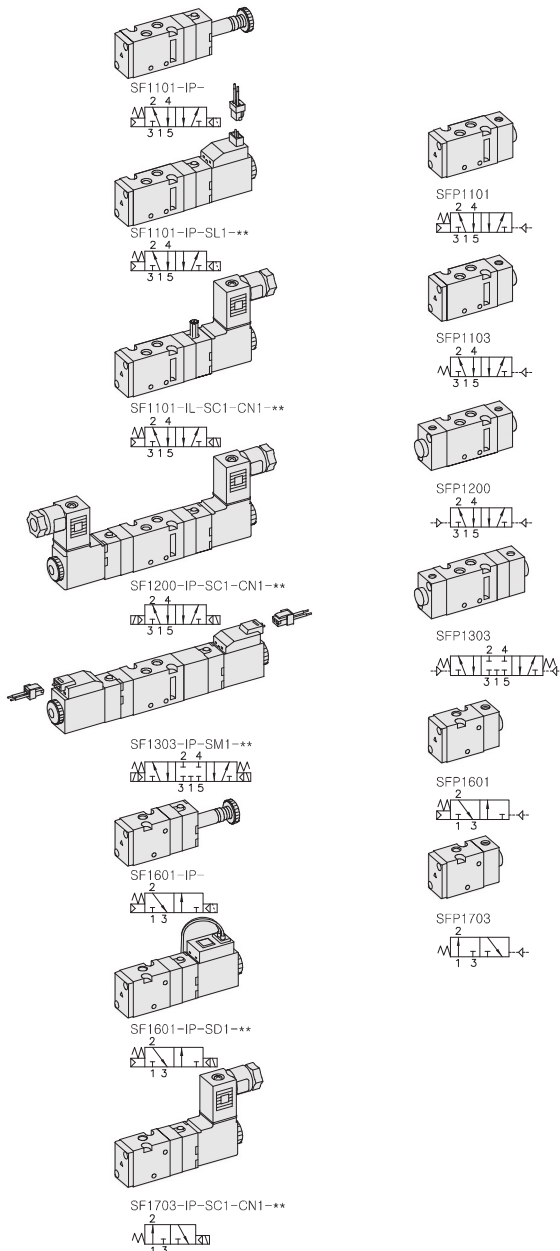
SF6000
Body Width-36mm
Thread-1/2

- SF 1000
- SF 2000
- SF 3000
- SF 4000
- SF 5000
- SF 6000

SF1000. M5

"F" FLEXIBLE Series
Solenoid / Pneumatic Valves

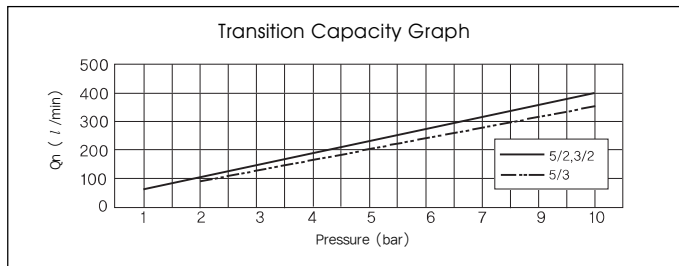
- 5/2, 5/3, 3/2 - M5
- 15mm Body Width
- Transition Flow 200ℓ/min (5bar)



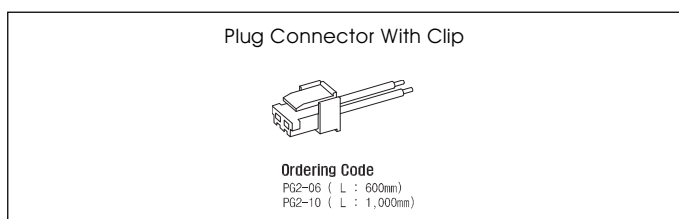
** : Voltage Selection (see page 80)

SPECIFICATION

ITEM	SERIES	SOLENOID, PNEUMATIC	
	FUNCTION	5, 3 Port 2 Position	5 Port 3 Position
Fluids	Compressed Air & Inert Gases		
Pressure(bar)	1.5~10.0		2.0~10.0
Eff. Section Area(mm ²)-5bar	3.6		3.0
Ambient & Fluid Temp.	5~60°C(41~140°F)		
Response Time(5bar)	25ms or Less		35ms or Less
Max. Working Frequency	5c/sec		3c/sec
Lubrication	Not Required(Use ISO VG32#)		
Manual Override	Push Button(Standard), Lever Lock(Optional)		
Coil Insulation Class	F-Class or Equivalent		
Permissible Voltage Variation	±10% of Rated Voltage		
Off Min. Residual Voltage	AC:20% or Less / DC:10% or Less		
Power Consumption	Holding-AC:3.5VA(60Hz) / DC:2.5W		



- ### The Material of Parts
- Valve Body : Die-Cast Aluminium
 - Pilot Parts : Glass Filled Nylon
 - Spool : Aluminium
 - Armature : Stainless Steel
 - Seals : NBR
 - Armature Seals : Viton
 - Spring : Stainless
 - Cap : Zinc Pressure Die-Cast

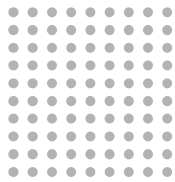


* The specification on each item can be amended without any pretence to improve a performance.
* The specification on each item can be different from actual specification.

ORDERING NO.

SF1 1 0 1 - I P - SC1 - CN1 - A2

Valve Series	Function	Port Size & Thread	Return Method	Int/Ext. Pilot	Manual Operator	Solenoid Coil Type	Connector Type	Voltage
SF1 : Solenoid Valve	1 5/2 Single	0 M5×0.8	0 None	I Internal Pilot	0 None	0 None	0 None	0 None
	2 5/2 Double	1 10-32 UNF	1 Air + Spring		P Push	SC1 3 Pin Connector Coil	CN1 Normal Connector	A2 AC 220V
	3 5/3 Closed Center		2 Air		Non-Locking	SG1 Grommet/Flying Leads	CD1 Connector With LED	A1 AC 110V
SFP1 : Pneumatic Valve	4 5/3 Open Center		3 Spring		L Lever Locking	SD1 Grommet/Flying Leads With LED	CZ1 Connector With LED & Surge Suppressor	A4 AC 24V
	5 5/3 Pressure Center					SL1 90 Degree Plug-in Wire Assembly With LED	D4 DC 24V	D4 DC 24V
	6 3/2 Normally Closed					SM1 180 Degree Plug-in Wire Assembly With LED	D2 DC 12V	D2 DC 12V
	7 3/2 Normally Open							

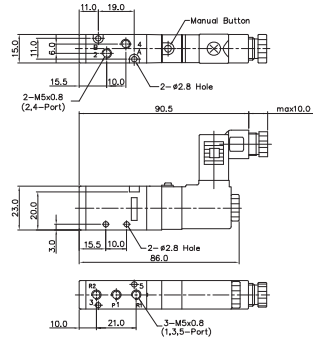


Solenoid & Pilot Actuated Spool Valves

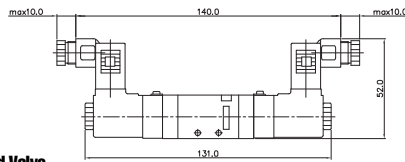
Port Thread **M5 × 0.8**

5Port 2Position Solenoid Valve

Single Solenoid
SF1101-IP-SC1-CN1-***

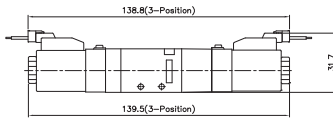


Double Solenoid
SF1200-IP-SC1-CN1-***



5Port 3Position Solenoid Valve

Closed Center
SF1303-IP-SM1-***



Exhaust Center
SF1403-IP-SM1-***



Pressure Center
SF1503-IP-SM1-***

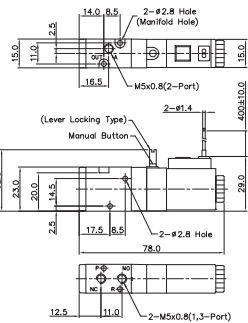


3Port 2Position Solenoid Valve

Normally Closed
SF1601-IP-SD1-***

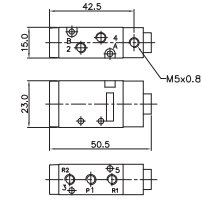


Normally Open
SF1701-IP-SD1-***

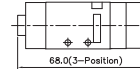
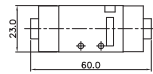
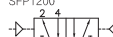


5Port 2Position Pneumatic Valve

Single Pneumatic
SFP1101

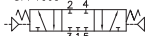


Double Pneumatic
SFP1200

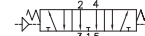


5Port 3Position Pneumatic Valve

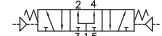
Closed Center
SFP1303



Exhaust Center
SFP1403



Pressure Center
SFP1503

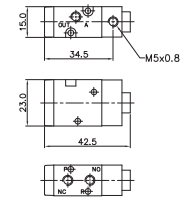


3Port 2Position Pneumatic Valve

Normally Closed
SFP1601



Normally Open
SFP1701

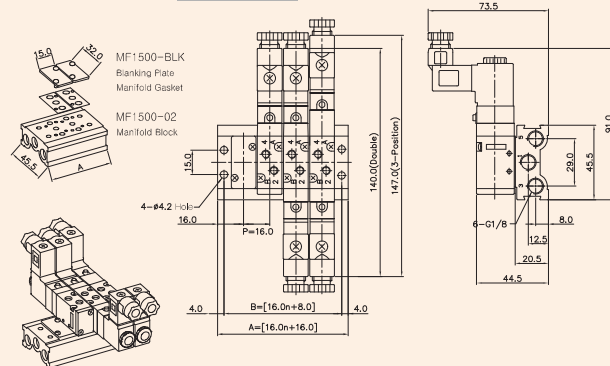


MF1000 MANIFOLD BLOCK

(SF1000 Solenoid & Pneumatic Valve Use)

5-Port Manifold Block

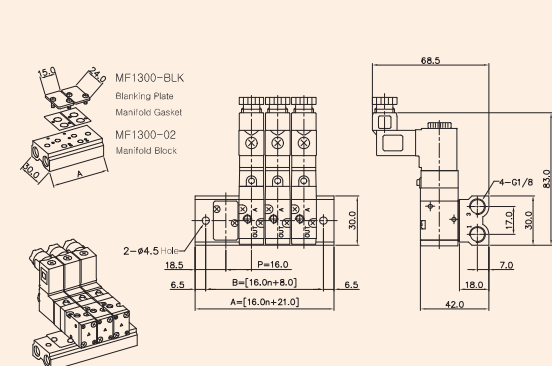
MF1500-4



SPORT MANIFOLD BLOCK DIMENSION					n-STATION
ITEM	2	4	6	8	10
B	40.0	72.0	104.0	136.0	168.0
A	48.0	80.0	112.0	144.0	176.0

3-Port Manifold Block

MF1300-4



SPORT MANIFOLD BLOCK DIMENSION					n-STATION
ITEM	2	4	6	8	10
B	40.0	72.0	104.0	136.0	168.0
A	53.0	85.0	117.0	149.0	181.0

Manifold Block Ordering Code

MF 1500 - 2

Series	Manifold Station
MF1500	5 Way
MF1300	3 Way
02	2-Station
04	4-Station
06	6-Station
08	8-Station
10	10-Station

Blanking Plate Ordering Code

MF1500-BLK

Blanking Plate.
(Material : SCP1)

Manifold Gasket.
(Material : NBR)

MF1500-BLK

Blanking Plate.
(Material : SCP1)

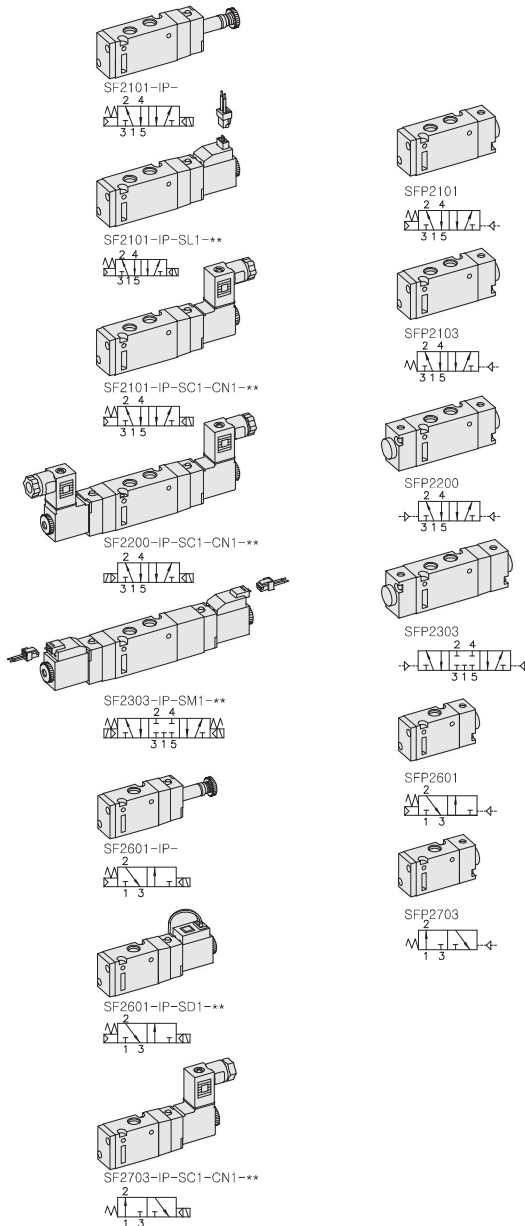
Manifold Gasket.
(Material : NBR)

SF2000. 1/8

"F" FLEXIBLE Series

Solenoid / Pneumatic Valves

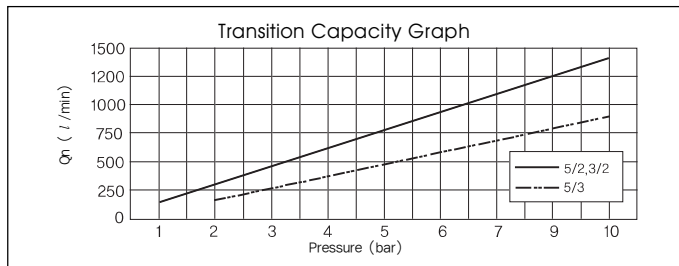
- 5/2, 5/3, 3/2 - 1/8
- 18mm Body Width
- Transition Flow 700ℓ/min (5bar)



** : Voltage Selection (see page 80)

SPECIFICATION

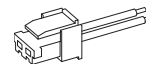
ITEM	SERIES	SOLENOID, PNEUMATIC	
	FUNCTION	5, 3 Port 2 Position	5 Port 3 Position
Fluids		Compressed Air & Inert Gases	
Pressure(bar)		1.5~10.0	2.0~10.0
Eff. Section Area(mm ²)-5bar		12.6	9.0
Ambient & Fluid Temp.		5~60°C(41~140°F)	
Response Time(5bar)		25ms or Less	35ms or Less
Max. Working Frequency		5c/sec	3c/sec
Lubrication		Not Required(Use ISO VG32#)	
Manual Override		Push Button(Standard), Lever Lock(Option)	
Coil Insulation Class		F-Class or Equivalent	
Permissible Voltage Variation		±10% of Rated Voltage	
Off Min. Residual Voltage		AC:20% or Less / DC:10% or Less	
Power Consumption		Holding-AC:3.5VA(60Hz) / DC:2.5W	



The Material of Parts

- Valve Body : Die-Cast Aluminium
- Pilot Parts : Glass Filled Nylon
- Spool : Aluminium
- Armature : Stainless Steel
- Seals : NBR
- Armature Seals : Viton
- Spring : Stainless
- Cap : Zinc Pressure Die-Cast

Plug Connector With Clip



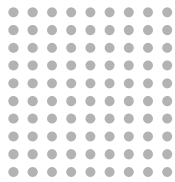
Ordering Code
 PG2-06 (L : 600mm)
 PG2-10 (L : 1,000mm)

- * The specification on each item can be amended without any prenotice to improve a performance.
- * The specification on each item can be different from actual specification.

ORDERING NO.

SF2 1 0 1 - I P - SC1 - CN1 - A2

Valve Series	Function	Port Size & Thread	Return Method	Int/Ext. Pilot	Manual Operator	Solenoid Coil Type	Connector Type	Voltage
SF2 : Solenoid Valve	1 5/2 Single	0 G 1/8	0 None	I Internal Pilot	0 None	0 None	0 None	0 None
	2 5/2 Double	1 NPT 1/8	1 Air + Spring		P Push	SC1 3 Pin Connector Coil	CN1 Normal Connector	A2 AC 220V
	3 5/3 Closed Center		2 Air		Non-Locking	SG1 Grommet/Flying Leads	CD1 Connector With LED	A1 AC 110V
SFP2 : Pneumatic Valve	4 5/3 Open Center		3 Spring		L Lever Locking	SD1 Grommet/Flying Leads With LED	CZ1 Connector With LED & Surge Suppressor	A4 AC 24V
	5 5/3 Pressure Center					SL1 90 Degree Plug-in Wire Assembly With LED		D4 DC 24V
	6 3/2 Normally Closed					SM1 180 Degree Plug-in Wire Assembly With LED		D2 DC 12V
	7 3/2 Normally Open							

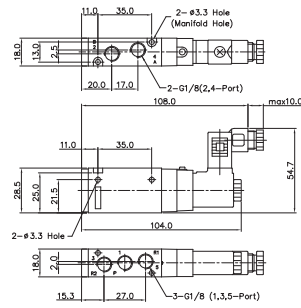


Solenoid & Pilot Actuated Spool Valves

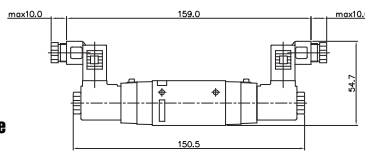
Port Thread 1/8

5Port 2Position Solenoid Valve

Single Solenoid
SF2101-IP-SC1-CN1-***

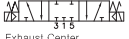


Double Solenoid
SF2200-IP-SC1-CN1-***

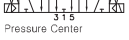


5Port 3Position Solenoid Valve

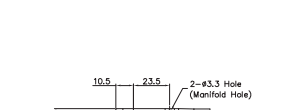
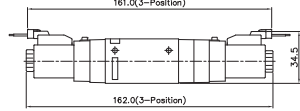
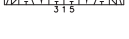
Closed Center
SF2303-IP-SM1-***



Exhaust Center
SF2403-IP-SM1-***



Pressure Center
SF2503-IP-SM1-***

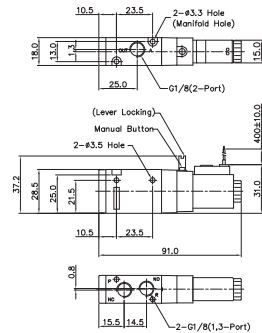


3Port 2Position Solenoid Valve

Normally Closed
SF2601-IP-SD1-***

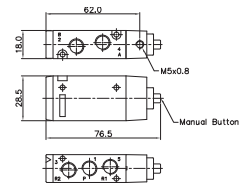


Normally Open
SF2701-IP-SD1-***

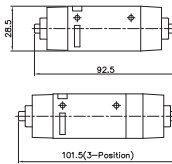


5Port 2Position Pneumatic Valve

Single Pneumatic
SFP2101



Double Pneumatic
SFP2200



5Port 3Position Pneumatic Valve

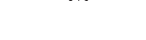
Closed Center
SFP2303



Exhaust Center
SFP2403



Pressure Center
SFP2503

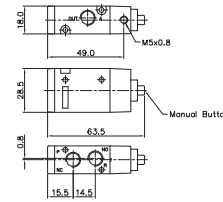


3Port 2Position Pneumatic Valve

Normally Closed
SFP2601



Normally Open
SFP2701

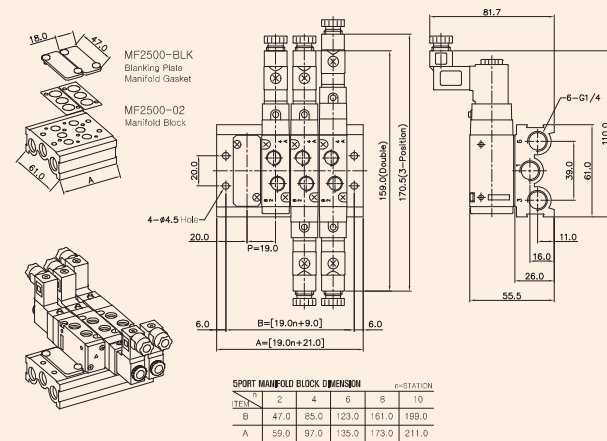


MF2000 MANIFOLD BLOCK

(SF2000 Solenoid & Pneumatic Valve Use)

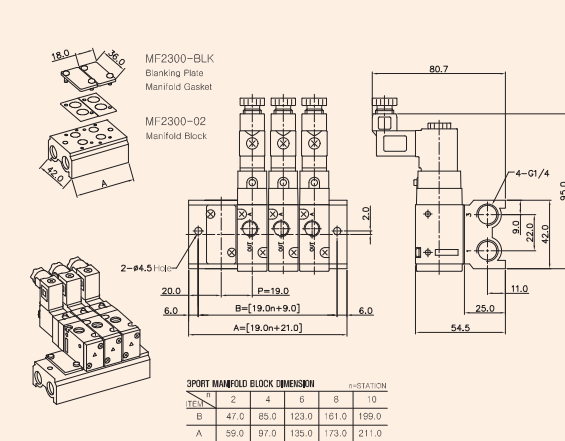
5-Port Manifold Block

MF2500-4

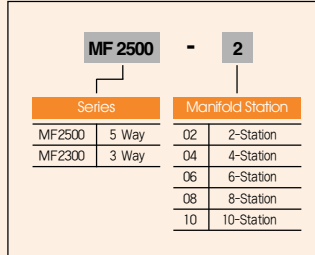


3-Port Manifold Block

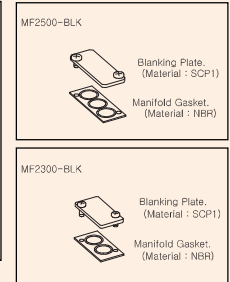
MF2300-4



Manifold Block Ordering Code



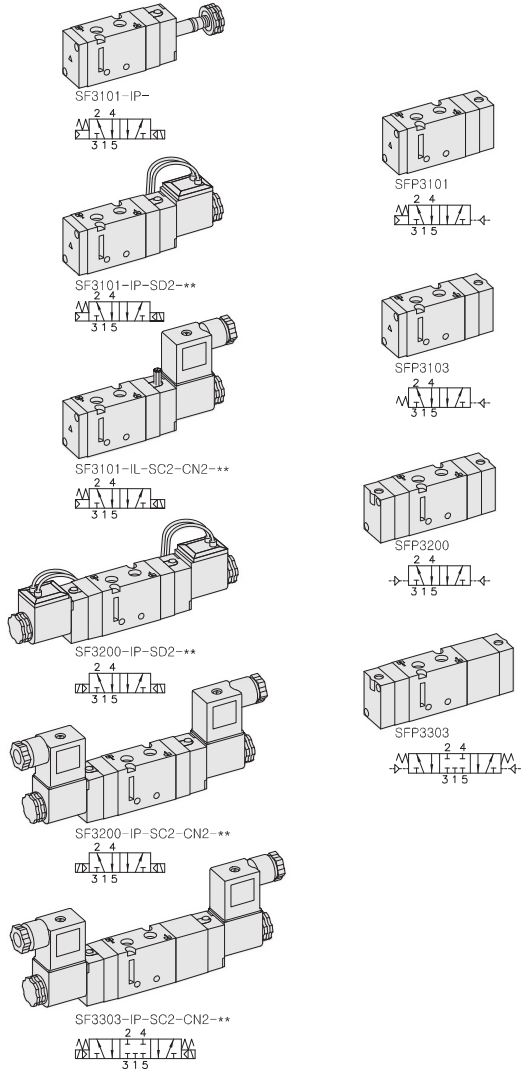
Blanking Plate Ordering Code



SF3000. 1/8

"F" FLEXIBLE Series
Solenoid / Pneumatic Valves

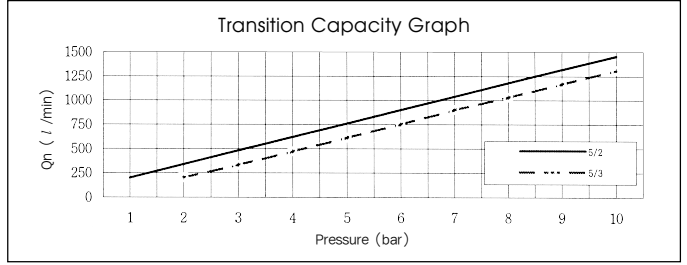
- 5/2, 5/3 - 1/8
- 23mm Body Width
- Transition Flow 760ℓ/min (5bar)



** : Voltage Selection (see page 80)

SPECIFICATION

ITEM	SERIES	SOLENOID, PNEUMATIC	
	FUNCTION	5 Port 2 Position	5 Port 3 Position
Fluids		Compressed Air & Inert Gases	
Pressure(bar)		1.5~10.0	2.0~10.0
Eff. Section Area(mm ²)-5bar		13.5	11.0
Ambient & Fluid Temp.		5~60°C(41~140°F)	
Response Time(5bar)		25ms or Less	35ms or Less
Max. Working Frequency		5c/sec	3c/sec
Lubrication		Not Required(Use ISO VG32#)	
Manual Override		Push Button(Standard), Lever Lock(Option)	
Coil Insulation Class		F-Class or Equivalent	
Permissible Voltage Variation		±10% of Rated Voltage	
Off Min. Residual Voltage		AC:20% or Less / DC:10% or Less	
Power Consumption		Holding-AC:5.5VA(60Hz) / DC:2.5W	



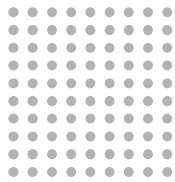
- ### The Material of Parts
- Valve Body : Die-Cast Aluminium
 - Pilot Parts : Glass Filled Nylon
 - Spool : Aluminium
 - Armature : Stainless Steel
 - Seals : NBR
 - Armature Seals : Viton
 - Spring : Stainless
 - Cap : Zinc Pressure Die-Cast

* The specification on each item can be amended without any prenotice to improve a performance.
* The specification on each item can be different from actual specification.

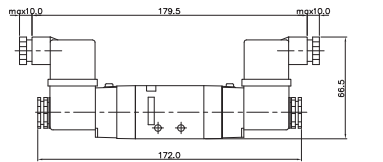
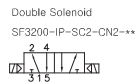
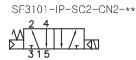
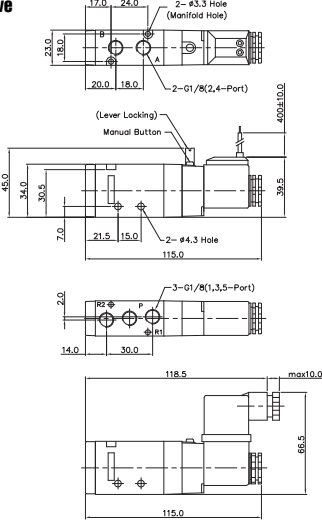
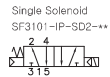
ORDERING NO.

SF3 1 0 1 - I P - SC2 - CN2 - A2

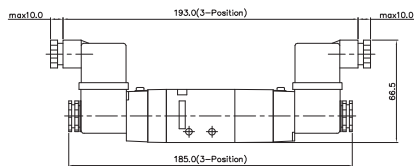
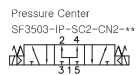
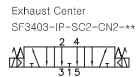
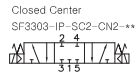
Valve Series	Function	Port Size & Thread	Return Method	Int/Ext. Pilot	Manual Operator	Solenoid Coil Type	Connector Type	Voltage
SF3 : Solenoid Valve	1 5/2 Single	0 G 1/8	0 None	I Internal Pilot	0 None	0 None	0 None	0 None
	2 5/2 Double	1 NPT 1/8	1 Air + Spring		P Push	SC2 3 Pin Connector Coil	CN2 Normal Connector	A2 AC 220V
	3 5/3 Closed Center		2 Air		Non-Locking	SG2 Grommet/Flying Leads	CD2 Connector With LED	A1 AC 110V
SFP3 : Pneumatic Valve	4 5/3 Open Center		3 Spring		L Lever Locking	SD2 Grommet/Flying Leads With LED	CZ2 Connector With LED & Surge Suppressor	A4 AC 24V
	5 5/3 Pressure Center							D4 DC 24V
								D2 DC 12V



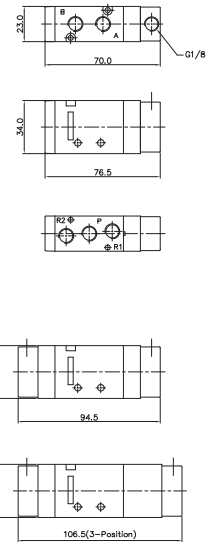
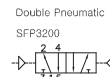
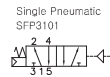
5Port 2Position Solenoid Valve



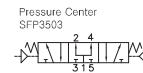
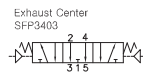
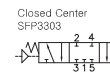
5Port 3Position Solenoid Valve



5Port 2Position Pneumatic Valve



5Port 3Position Pneumatic Valve



Manifold Block Ordering Code

MF 3500 - 2

Series	Manifold Station
MF3500	5 Way
	02 2-Station
	04 4-Station
	06 6-Station
	08 8-Station
	10 10-Station

Blanking Plate Ordering Code

MF3500-BLK

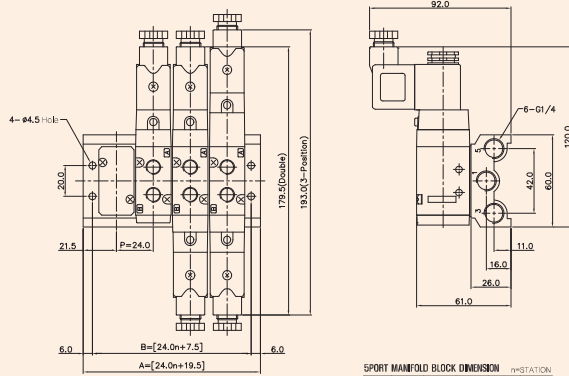
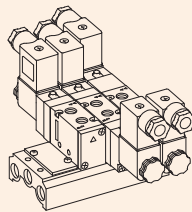
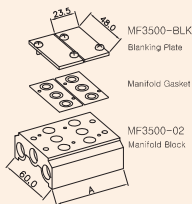
Blanking Plate. (Material: SCP1)
Manifold Gasket. (Material: NBR)

MF3000 MANIFOLD BLOCK

(SF3000 Solenoid & Pneumatic Valve Use)

5-Port Manifold Block

MF3500-4



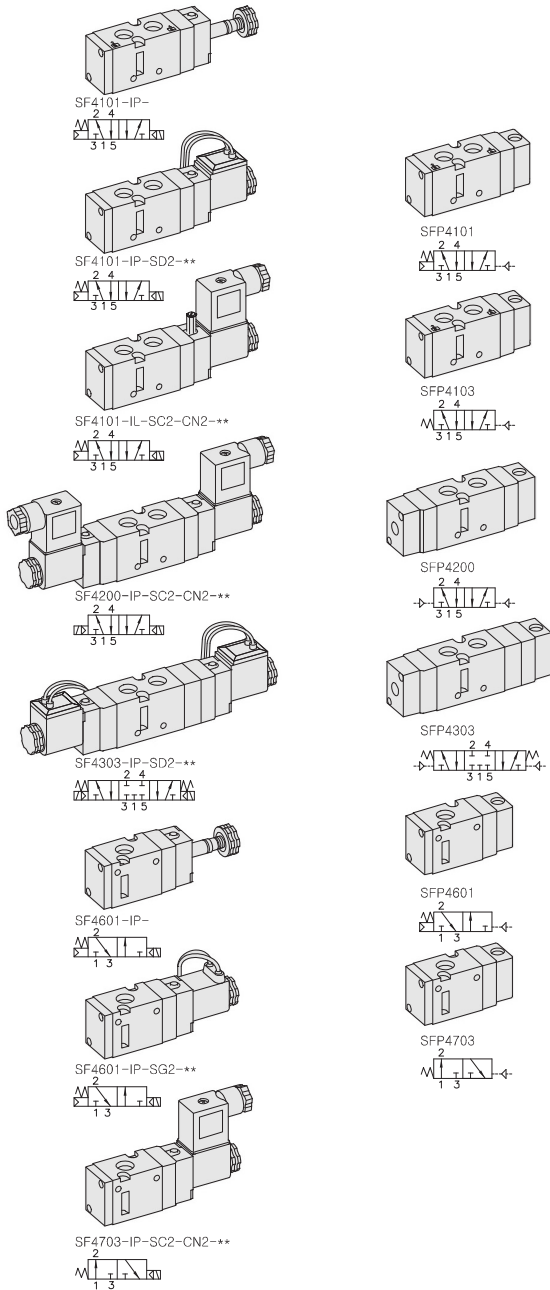
SPORT MANIFOLD BLOCK DIMENSION

n	2	4	6	8	10
B	55.5	103.5	151.5	199.5	247.5
A	67.5	115.5	163.5	211.5	259.5

SF4000. 1/4

"F" FLEXIBLE Series
Solenoid / Pneumatic Valves

- 5/2, 5/3, 3/2 - 1/4
- 26mm Body Width
- Transition Flow 1000ℓ/min (5bar)



** : Voltage Selection (see page 80)

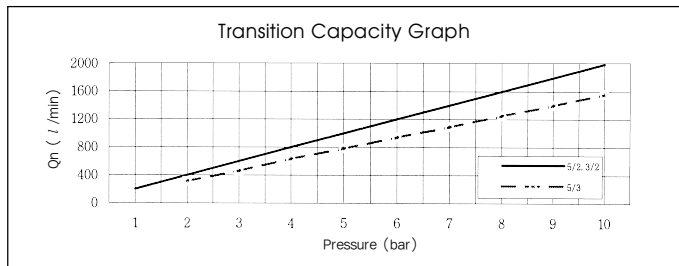
ORDERING NO.

SF4 1 0 1 - I P - SC2 - CN2 - A2

Valve Series	Function	Port Size & Thread	Return Method	Int/Ext. Pilot	Manual Operator	Solenoid Coil Type	Connector Type	Voltage
SF4 : Solenoid Valve	1 5/2 Single	0 G 1/4	0 None	I Internal Pilot	0 None	0 None	0 None	0 None
	2 5/2 Double	1 NPT 1/4	1 Air + Spring		P Push Non-Locking	SC2 3 Pin Connector Coil	CN2 Normal Connector	A2 AC 220V
	3 5/3 Closed Center		2 Air		L Lever Locking	SG2 Grommet/Flying Leads	CD2 Connector With LED	A1 AC 110V
SFP4 : Pneumatic Valve	4 5/3 Open Center		3 Spring			CZ2 Connector With LED & Surge Suppressor	A4 AC 24V	
	5 5/3 Pressure Center					SD2 Grommet/Flying Leads With LED	D4 DC 24V	
	6 3/2 Normally Closed						D2 DC 12V	
	7 3/2 Normally Open							

SPECIFICATION

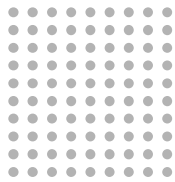
ITEM	SERIES	SOLENOID, PNEUMATIC	
	FUNCTION	5, 3 Port 2 Position	5 Port 3 Position
Fluids		Compressed Air & Inert Gases	
Pressure(bar)		1.5~10.0	2.0~10.0
Eff. Section Area(mm ²)-5bar		19.0	11.5
Ambient & Fluid Temp.		5~60°C(41~140°F)	
Response Time(5bar)		25ms or Less	35ms or Less
Max. Working Frequency		5c/sec	3c/sec
Lubrication		Not Required(Use ISO VG32#)	
Manual Override		Push Button(Standard), Lever Lock(Optional)	
Coil Insulation Class		F-Class or Equivalent	
Permissible Voltage Variation		±10% of Rated Voltage	
Off Min. Residual Voltage		AC:20% or Less / DC:10% or Less	
Power Consumption		Holding-AC:5.5VA(60Hz) / DC:2.5W	



The Material of Parts

- Valve Body : Die-Cast Aluminium
- Pilot Parts : Glass Filled Nylon
- Spool : Aluminium
- Armature : Stainless Steel
- Seals : NBR
- Armature Seals : Viton
- Spring : Stainless
- Cap : Zinc Pressure Die-Cast

* The specification on each item can be amended without any prenotice to improve a performance.
* The specification on each item can be different from actual specification.

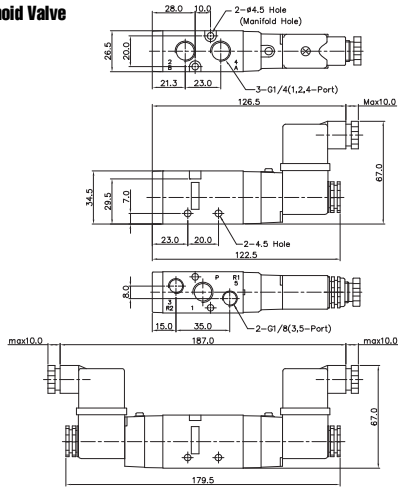


Solenoid & Pilot Actuated Spool Valves

Port Thread 1/4

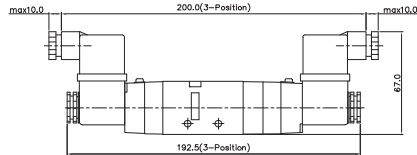
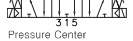
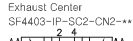
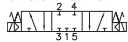
5Port 2Position Solenoid Valve

Single Solenoid
SF4101-IP-SC2-CN2-+-



5Port 3Position Solenoid Valve

Closed Center
SF4303-IP-SC2-CN2-+-

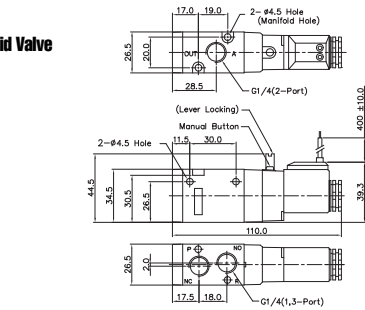


3Port 2Position Solenoid Valve

Normally Closed
SF4601-IP-SD2-+-



Normally Open
SF4701-IP-SD2-+-

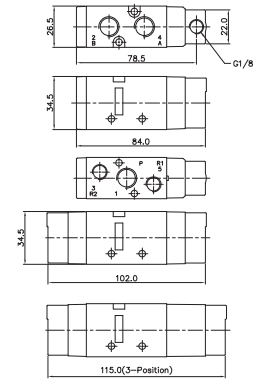
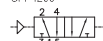


5Port 2Position Pneumatic Valve

Single Pneumatic
SFP4101

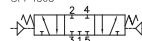


Double Pneumatic
SFP4200

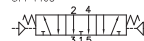


5Port 3Position Pneumatic Valve

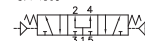
Closed Center
SFP4303



Exhaust Center
SFP4403

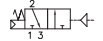


Pressure Center
SFP4503

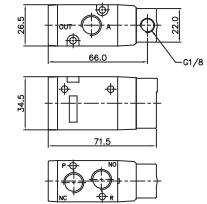
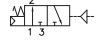


3Port 2Position Pneumatic Valve

Normally Closed
SFP4601



Normally Open
SFP4701

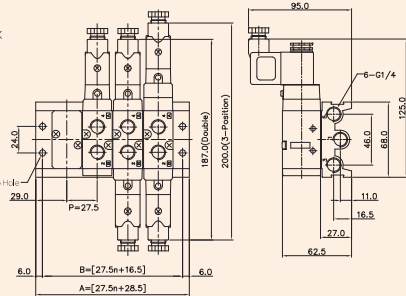
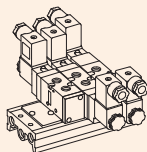
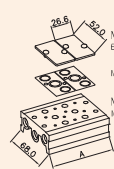


MF4000 MANIFOLD BLOCK

(SF4000 Solenoid & Pneumatic Valve Use)

5-Port Manifold Block

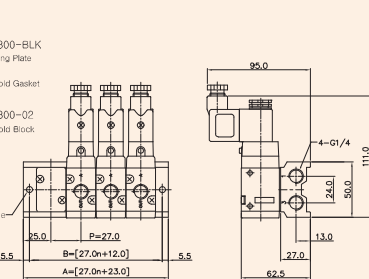
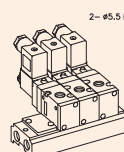
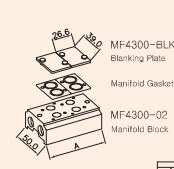
MF4500-4



5PORT MANIFOLD BLOCK DIMENSION		n-STATION				
ITEM		2	4	6	8	10
B		71.5	126.5	181.5	236.5	291.5
A		83.5	138.5	193.5	248.5	303.5

3-Port Manifold Block

MF4300-4



3PORT MANIFOLD BLOCK DIMENSION		n-STATION				
ITEM		2	4	6	8	10
B		66.0	120.0	174.0	228.0	282.0
A		77.0	131.0	185.0	239.0	293.0

Manifold Block Ordering Code

MF 4500		-		2	
Series	Manifold Station				
MF4500	5 Way	02	2-Station		
MF4300	3 Way	04	4-Station		
		06	6-Station		
		08	8-Station		
		10	10-Station		

Blanking Plate Ordering Code

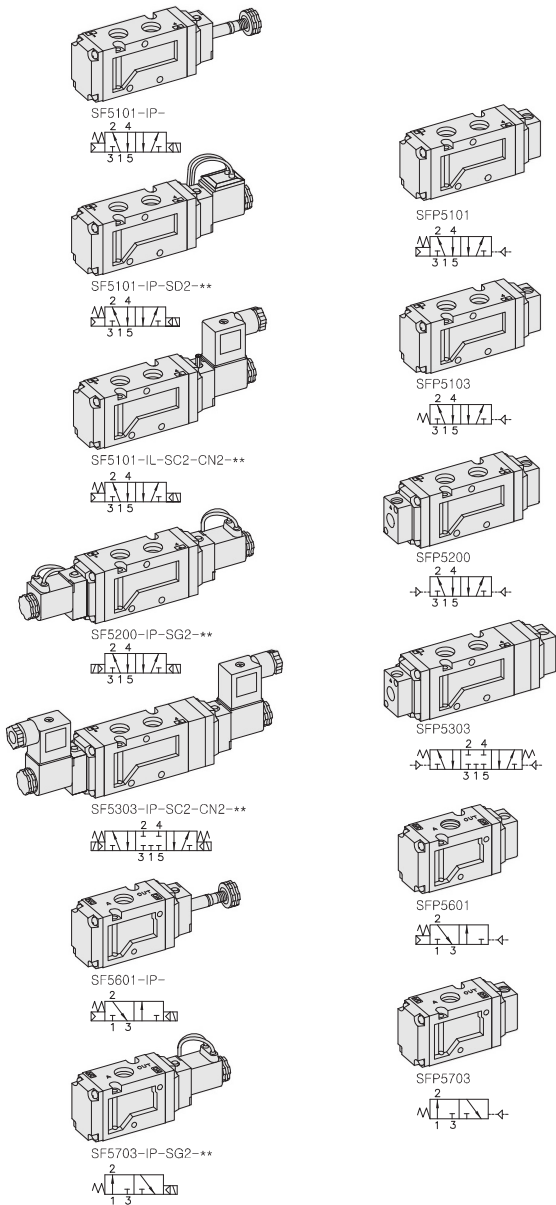
MF4500-BLK	Blanking Plate. (Material: SCP1)
	Manifold Gasket. (Material: NBR)

MF4300-BLK	Blanking Plate. (Material: SCP1)
	Manifold Gasket. (Material: NBR)

SF5000. 3/8

"F" FLEXIBLE Series
Solenoid / Pneumatic Valves

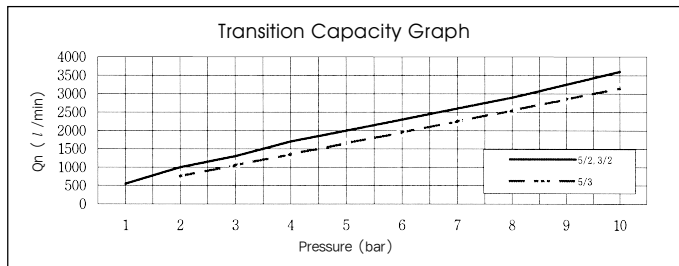
- 5/2, 5/3, 3/2 - 3/8
- 32mm Body Width
- Transition Flow 2000ℓ/min (5bar)



** : Voltage Selection (see page 80)

SPECIFICATION

ITEM	SERIES	SOLENOID, PNEUMATIC	
	FUNCTION	5, 3 Port 2 Position	5 Port 3 Position
Fluids		Compressed Air & Inert Gases	
Pressure(bar)		1.5~10.0	2.0~10.0
Eff. Section Area(mm ²)-5bar		36.0	30.0
Ambient & Fluid Temp.		5~60°C (41~140°F)	
Response Time(5bar)		30ms or Less	40ms or Less
Max. Working Frequency		5c/sec	3c/sec
Lubrication		Not Required(Use ISO VG32#)	
Manual Override		Push Button(Standard), Lever Lock(Optional)	
Coil Insulation Class		F-Class or Equivalent	
Permissible Voltage Variation		±10% of Rated Voltage	
Off Min. Residual Voltage		AC:20% or Less / DC:10% or Less	
Power Consumption		Holding-AC:5.5VA(60Hz) / DC:2.5W	



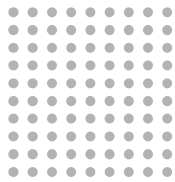
- ### The Material of Parts
- Valve Body : Die-Cast Aluminium
 - Pilot Parts : Glass Filled Nylon
 - Spool : Aluminium
 - Armature : Stainless Steel
 - Seals : NBR
 - Armature Seals : Viton
 - Spring : Stainless
 - Cap : Zinc Pressure Die-Cast

* The specification on each item can be amended without any prenotice to improve a performance.
* The specification on each item can be different from actual specification.

ORDERING NO.

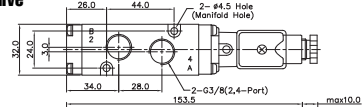
SF5 1 0 1 - I P - SC2 - CN2 - A2

Valve Series	Function	Port Size & Thread	Return Method	Int/Ext. Pilot	Manual Operator	Solenoid Coil Type	Connector Type	Voltage
SF5 : Solenoid Valve	1	5/2 Single	0	None	I	Internal Pilot	0	None
	2	5/2 Double	1	G 3/8	1	Air + Spring	0	None
	3	5/3 Closed Center	1	NPT 3/8	1	Air + Spring	0	None
	4	5/3 Open Center	1	NPT 3/8	1	Air + Spring	0	None
SFP5 : Pneumatic Valve	5	5/3 Pressure Center	1	NPT 3/8	1	Air + Spring	0	None
	6	3/2 Normally Closed	1	NPT 3/8	1	Air + Spring	0	None
	7	3/2 Normally Open	1	NPT 3/8	1	Air + Spring	0	None

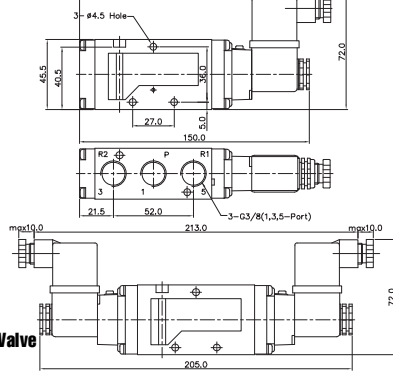


5Port 2Position Solenoid Valve

Single Solenoid
SF5300-HP-SC2-CN2-***
22 44
33 65



Double Solenoid
SF5300-HP-SC2-CN2-***
22 44
33 65

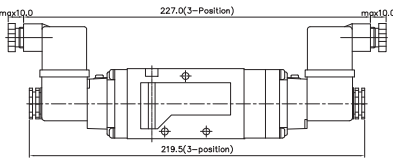


5Port 3Position Solenoid Valve

Closed Center
SF5303-IP-SC2-CN2-***
22 44
33 65

Exhaust Center
SF5403-IP-SC2-CN2-***
22 44
33 65

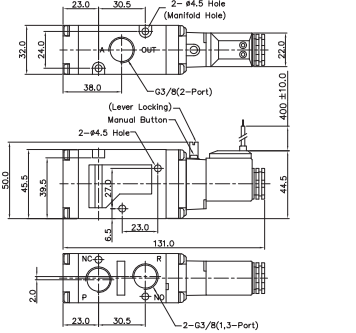
Pressure Center
SF5503-IP-SC2-CN2-***
22 44
33 65



3Port 2Position Solenoid Valve

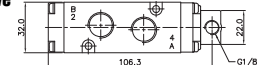
Normally Closed
SF5601-IP-SD2-***
22 44
33 65

Normally Closed
SF5701-IP-SD2-***
22 44
33 65

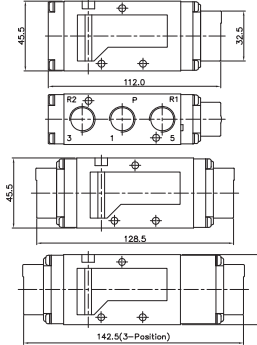


5Port 2Position Pneumatic Valve

Single Pneumatic
SFP5101
22 44
33 65



Double Pneumatic
SFP5200
22 44
33 65



5Port 3Position Pneumatic Valve

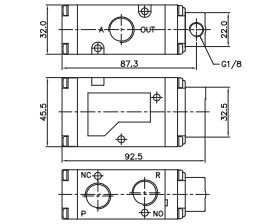
Closed Center
SFP5303 2 4
33 65

Exhaust Center
SFP5403 2 4
33 65

Pressure Center
SFP5503 2 4
33 65

3Port 2Position Pneumatic Valve

Single Pneumatic
SFP5601
22 44
33 65



MF5000 MANIFOLD BLOCK

(SF5000 Solenoid & Pneumatic Valve Use)

Manifold Block Ordering Code

MF 5500 - 2

Series	Manifold Station
MF5500	5 Way
MF5300	3 Way

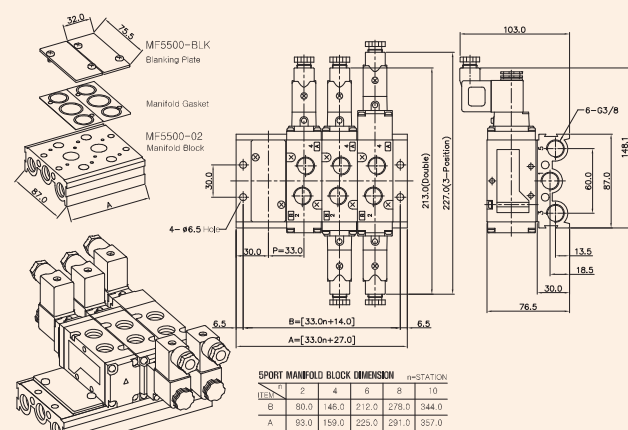
Blanking Plate Ordering Code

MF5500-BLK
Blanking Plate.
(Material: SCP1)
Manifold Gasket.
(Material: NBR)

MF5300-BLK
Blanking Plate.
(Material: SCP1)
Manifold Gasket.
(Material: NBR)

5-Port Manifold Block

MF5500-4

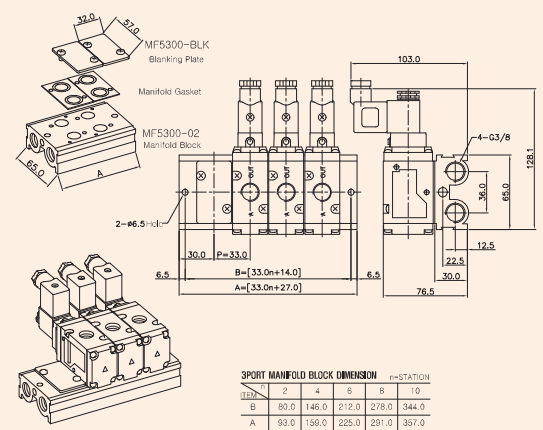


5SPORT MANIFOLD BLOCK DIMENSION n=STATION

Unit	2	4	6	8	10
B	80.0	146.0	212.0	278.0	344.0
A	93.0	159.0	225.0	291.0	357.0

3-Port Manifold Block

MF5300-4



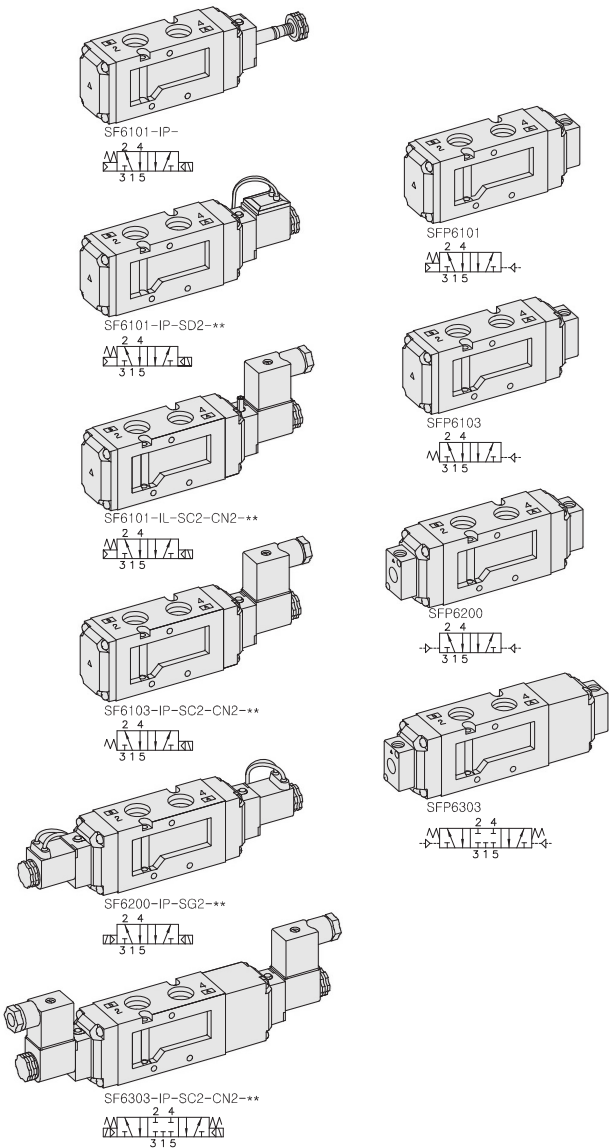
3SPORT MANIFOLD BLOCK DIMENSION n=STATION

Unit	2	4	6	8	10
B	80.0	146.0	212.0	278.0	344.0
A	93.0	159.0	225.0	291.0	357.0

SF6000. 1/2

"F" FLEXIBLE Series
Solenoid / Pneumatic Valves

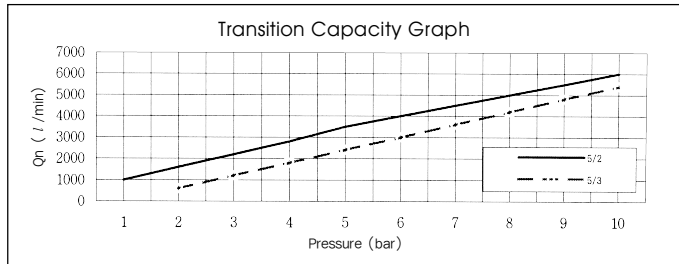
- 5/2, 5/3 - 1/2
- 36mm Body Width
- Transition Flow 3500ℓ/min (5bar)



** : Voltage Selection (see page 80)

SPECIFICATION

ITEM	SERIES	SOLENOID, PNEUMATIC	
	FUNCTION	5 Port 2 Position	5 Port 3 Position
Fluids		Compressed Air & Inert Gases	
Pressure(bar)		1.5~10.0	2.0~10.0
Eff. Section Area(mm ²)-5bar		65.0	50.0
Ambient & Fluid Temp.		5~60°C(41~140°F)	
Response Time(5bar)		30ms or Less	40ms or Less
Max. Working Frequency		2c/sec	1c/sec
Lubrication		Not Required(Use ISO VG32#)	
Manual Override		Push Button(Standard), Lever Lock(Optional)	
Coil Insulation Class		F-Class or Equivalent	
Permissible Voltage Variation		±10% of Rated Voltage	
Off Min. Residual Voltage		AC:20% or Less / DC:10% or Less	
Power Consumption		Holding-AC:5.5VA(60Hz) / DC:2.5W	



The Material of Parts

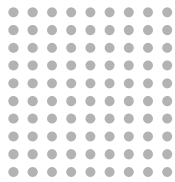
- Valve Body : Die-Cast Aluminium
- Pilot Parts : Glass Filled Nylon
- Spool : Aluminium
- Armature : Stainless Steel
- Seals : NBR
- Armature Seals : Viton
- Spring : Stainless
- Cap : Zinc Pressure Die-Cast

* The specification on each item can be amended without any prenotice to improve a performance.
* The specification on each item can be different from actual specification.

ORDERING NO.



Valve Series	Function	Port Size & Thread	Return Method	Int/Ext. Pilot	Manual Operator	Solenoid Coil Type	Connector Type	Voltage
SF6 : Solenoid Valve	1 5/2 Single	0 G 1/2	0 None	I Internal Pilot	0 None	0 None	0 None	0 None
	2 5/2 Double	1 NPT 1/2	1 Air + Spring		P Push Non-Locking	SC2 3 Pin Connector Coil	CN2 Normal Connector	A2 AC 220V
	3 5/3 Closed Center		2 Air		L Lever Locking	SG2 Grommet/Flying Leads	CD2 Connector With LED	A1 AC 110V
SFP6 : Pneumatic Valve	4 5/3 Open Center		2 Air			CZ2 Connector With LED	A4 AC 24V	A4 AC 24V
	5 5/3 Pressure Center		3 Spring			SD2 Grommet/Flying Leads With LED	& Surge Suppressor	D4 DC 24V
								D2 DC 12V

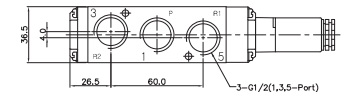
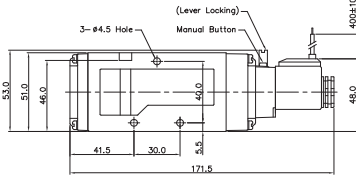
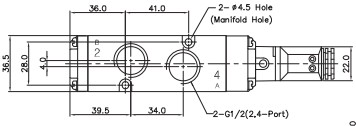


Solenoid & Pilot Actuated Spool Valves

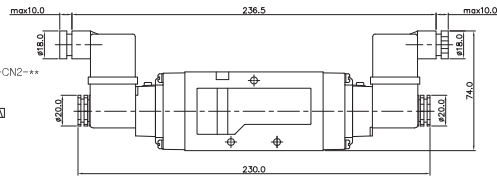
Port Thread 1/2

5Port 2Position Solenoid Valve

Single Solenoid
SF6101-IP-SD2-***

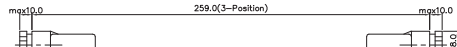


Double Solenoid
SF6200-IP-SC2-CN2-***

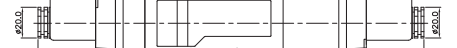
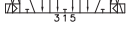


5Port 3Position Solenoid Valve

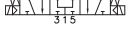
Closed Center
SF6303-IP-SC2-CN2-***



Exhaust Center
SF6403-IP-SC2-CN2-***



Pressure Center
SF6503-IP-SC2-CN2-***

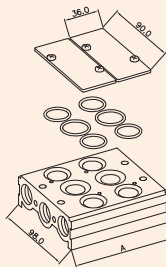


MF6000 MANIFOLD BLOCK

(SF6000 Solenoid & Pneumatic Valve Use)

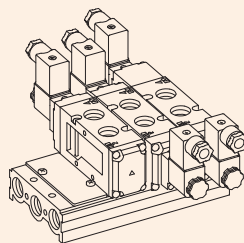
5-Port Manifold Block

MF6500-4



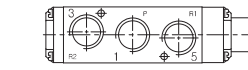
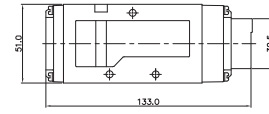
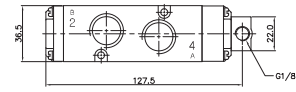
MF6500-BLK
Blanking Plate
Gasket O-Ring

MF6500-02
Manifold Block

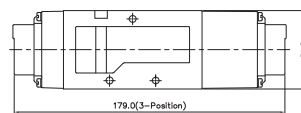
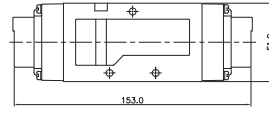
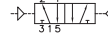


5Port 2Position Pneumatic Valve

Single Pneumatic
SFP6101

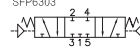


Double Pneumatic
SFP6200

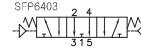


5Port 3Position Pneumatic Valve

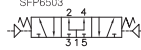
Closed Center
SFP6303



Exhaust Center
SFP6403



Pressure Center
SFP6503



Manifold Block Ordering Code

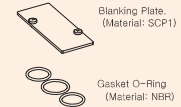
MF 6500

- 2

Series	Manifold Station
MF6500	5 Way
	02 2-Station
	04 4-Station
	06 6-Station
	08 8-Station
	10 10-Station

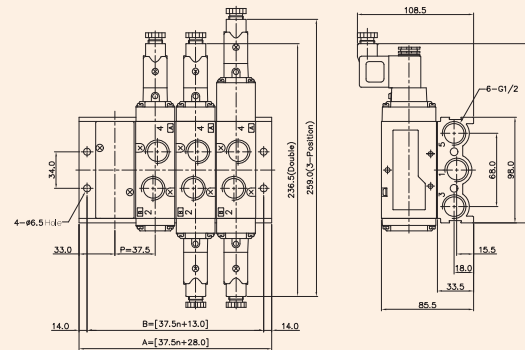
Blanking Plate Ordering Code

MF6500-BLK



Blanking Plate.
(Material: SCP1)

Gasket O-Ring
(Material: NBR)



5-PORT MANIFOLD BLOCK DIMENSION					n=STATION
MIN	2	4	6	8	10
B	85.0	163.0	238.0	313.0	388.0
A	103.0	178.0	253.0	328.0	403.0