

Modular Type Graphic Operator Interface

GP4000M SERIES

Easy to identify
Easy to install
Easy to connect

3.5"
QVGA



GP-4201TM

5.7"
QVGA



GP-4301TM

Easy to identify

Easy to install

Easy to connect

Operation panel with realistic graphics comes as a HMI standard

Simple and precise operation made possible by the 65,536-colors TFT display.
Easy to identify, easy to install and easy to connect via a variety of interfaces.

Easy to identify

Powerful TFT LCD expression in 65,536 colors

Realize expressive operation screens using 65,536-color and 3D Real Parts.



Enhanced graphics for even the most basic functions



Utilize 65,536 colors for basic functions such as 7-digit display and color-swap for alarm status messages.



A variety of graphical fonts provides easy-to-read numbers.

Use the project converter to distribute screens assets with GP-Pro EX.

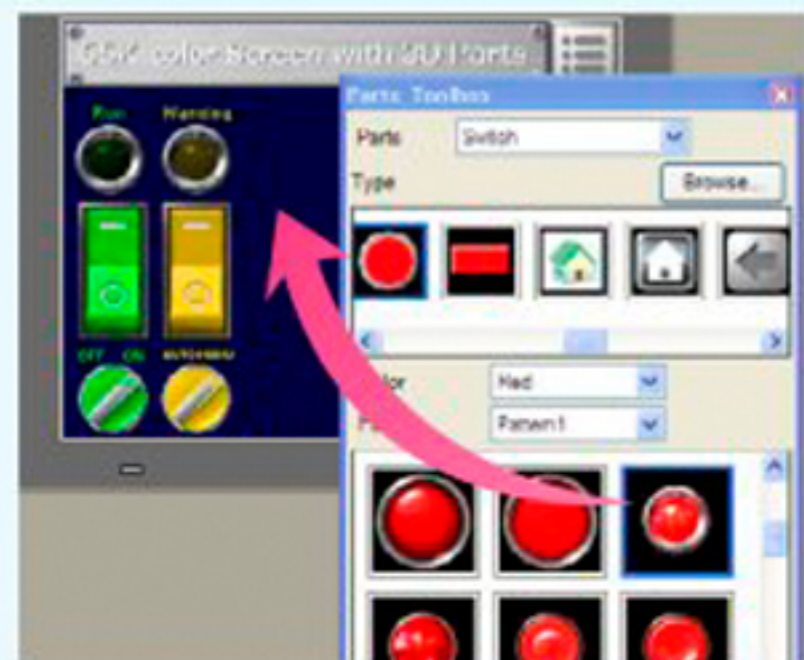
Easy to create

GP-Pro EX Ver. 2.71

Drag-and-drop allows you to easily create operation screens on GP-Pro EX, a screen creation software.

In addition, it's easy to create attractive screens by downloading backgrounds and illustrations online.

<http://www.proface.com/otasuke/>





Low Power Consumption

5.7" 6.8 W or less
3.5" 6.5 W or less

Light Weight

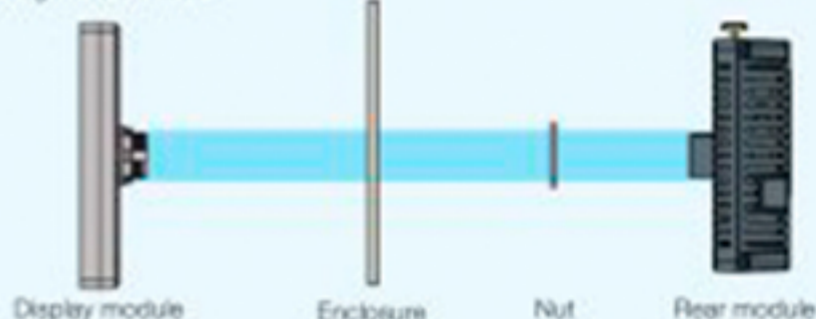
5.7" 0.62 kg (1.36 lb.) or less
3.5" 0.36 kg (0.79 lb.) or less

*main unit only

Easy to install

Just make a $\phi 22$ mm [0.87 in.] circular hole.

* Image of 5.7" model



Easy to connect

Provides a variety of onboard interfaces for hassle-free connection to various peripheral and control devices.



The Ethernet Multilink function allows you to add a GP as a sub-display on an Ethernet network without changing any machine settings.

Connect to various control devices via Ethernet or a serial port.

Connect directly to a variety of devices

* On the GP4000M Series, either of a serial interface or an Ethernet interface can be active for communication to control devices.

As of July 2011

Maker Name	Driver Name	SIO or Ethernet	Ethernet multi-link
Digital Electronics Corporation	General Ethernet General SIO Memory Link		
Fabek Automation Corporation	FB Series SIO		
Fuji Electric Co., Ltd.	MICREX-F Series SIO MICREX-SX Series Ethernet MICREX-SX Series SIO		
JTEKT Corporation	TOYOPUC CMP-LINK Ethernet TOYOPUC CMP-LINK SIO		
KEYENCE Corporation	KV700/1300/090/5000 CPU Direct KV-10_80RWYW CPU Direct		
KONNECTRONICS INDUSTRIES CO., LTD.	KOSTAC/OL Series CCM SIO KOSTAC/OL Series MODBUS TCP		
LS Industrial Systems Co., Ltd.	MASTER-K Series Cnet XGT Series Cnet XGT Series Panel		
Mitsubishi Electric Corporation	A Series CPU Direct		

Maker Name	Driver Name	SIO or Ethernet	Ethernet multi-link
Mitsubishi Electric Corporation	A Series Computer Link A Series Ethernet FX Series Computer Link FX Series CPU Direct FX Series Ethernet Q Series CPU Direct Q Series QnJ CPU Ethernet Q/QnA Serial Communication Q/QnA Series Ethernet QnA Series CPU Direct QUTE Series CPU Direct		
Modbus-IDA	General MODBUS RTU SIO Master General MODBUS TCP Master		
OMRON Corporation	C/CV Series HOST Link CS/CJ Series Ethernet CS/CJ Series HOST Link FP Series Computer Link SIO		


Maker Name	Driver Name	SIO or Ethernet	Ethernet multi-link
RKC INSTRUMENT INC	Temp. Controller MODBUS SIO Temp. Controller RKC SIO		
Rockwell Automation, Inc.	DF1 DH-485		
Schneider Electric SA	EtherNet/IP MODBUS SIO Master MODBUS Slave MODBUS TCP Master		
Siemens AG	Uni-Telway SIMATIC S7 Ethernet SIMATIC S7 MPI Direct		
Series Building Technologies	SAPHIR SIO		
TOSHIBA MACHINE CO., LTD.	TC Series(TCnet/TC200)		
YASKAWA Electric Corporation	MP/SARVO Ethernet MP Series SIO(Extension)		
Yokogawa Electric Corporation	Personal Computer Link SIO		

More drivers under development Visit the Otasuke Pro! support website for the newest drivers and more detailed information! → <http://www.pro-face.com/otasuke/>

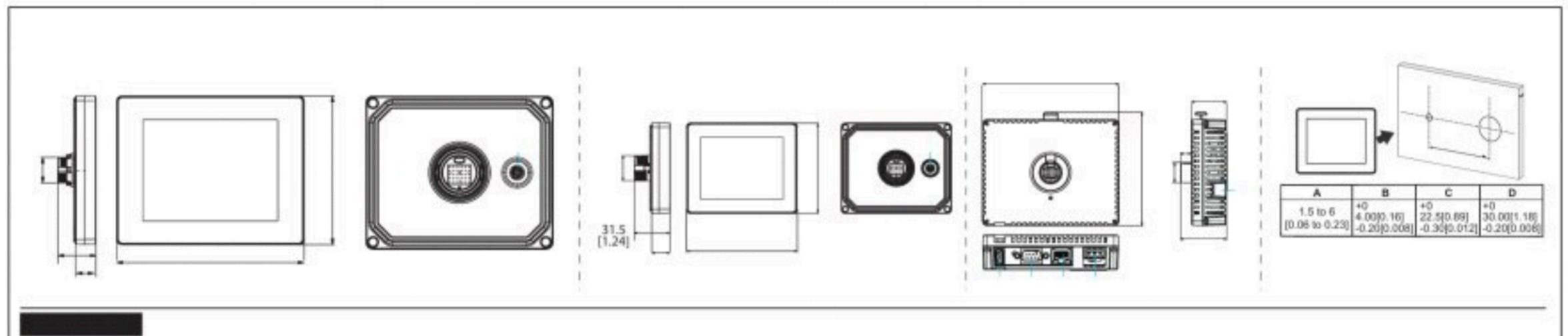
Functional Specifications		GP-4301TM	GP-4201TM
Display Type		5.7" TFT Color LCD	3.5" TFT Color LCD
Display Colors		65,536 colors	
Resolution		320 x 240 pixels (QVGA)	
LED Backlight		White LED	
Effective Display Area		W115.2 x H86.4 mm(W4.53xH3.40 in.)	W70.56 x H52.92 mm(W2.78xH2.08 in.)
Language Fonts *1		Japanese, English, Chinese (Simplified), Chinese (Traditional), Korean, Cyrillic, Thai	
Character Sizes		Standard font: 8 x 8, 8 x 16, 16 x 16 and 32 x 32 pixel fonts, Stroke font: 6 to 127 pixel fonts, Image font: 8 to 72 pixel fonts	
Application memory *2		FLASH EPROM 8 MB	
Clock Accuracy		Uses the clock of an external device	
Touch Panel Type		Resistive Film (analog)	
Interface	Ethernet LAN	IEEE802.3i/ IEEE802.3u, 10BASE-T/100BASE-TX Connector Modular jack (RJ-45) x 1	
	Serial (COM)	RS232C / RS422 / RS485 Asynchronous Transmission, Data Length: 7 or 8 bit, Parity: none, Odd or Even, Stop Bit: 1 or 2 bit, Data Transmission Speed: 2,400 bps to 187,500 bps Connector: 2-piece terminal block 9 pin	
	USB (Type A)	Conforms to USB2.0 (Type A) x 1, Power Supply Voltage: DC 5 V 5 %, Communication Distance: 3 m (9.84 ft) or less	
	USB Type mini B	Conforms to USB2.0 (mini B) x 1, Communication Distance: 5 m (16.40 ft) or less	

*1 Please refer to the GP-Pro EX Reference Manual for details on font types and character codes.

*2 Capacity available for user application. The capacity depends on how many fonts you load from Editor software.

General Specifications		GP-4301TM	GP-4201TM
International Safety Standards			
Conforming Standards		UL508, UL 1604 *3 or ANSI/ISA 12.12.01 *3, CSA-C22.2 No.142, CSA-C22.2 No.213 *3, Functional Specifications, 2004/108/EC EMC Directive, GOST-R, KC	
Input Voltage		DC24V	
Power Consumption		6.8 W or less	6.5 W or less
Surrounding Air Temperature		0 to 50 °C (32 to 122 °F)	
Grounding		Functional grounding: Grounding resistance of 100Ω, 2mm ² (AWG 14) or thicker wire, or your country's applicable standard.	
Vibration Resistance		IEC/EN61131-2 compliant, 5 to 9 Hz Single amplitude 3.5 mm [0.14 in.], 9 to 150 Hz Fixed acceleration: 9.8 m/s ² , X, Y, Z directions for 10 cycles (100 min)	
Structure		NEMA#250 Type 4x (indoor, installed in an enclosure) Display Module: IP 65f (IEC60529) Rear Module: IP 20 (IEC 60529)	
Weight		0.62 kg (1.36 lb.) or less (main unit only)	0.36 kg (0.79 lb.) or less (main unit only)
Cooling Method		Natural air circulation	

*3 Suitable for use in hazardous locations in accordance with Class I Division 2 Groups A, B, C and D standards.



Units

Product Name	Model No.	Description
GP-4301TM	PFXGM4301TAD	5.7", QVGA (320 x 240 dots), 65,536 colors, RS-232C/422/485, USB (Host x1, Device x1), Ethernet, DC24V
GP-4201TM	PFXGM4201TAD	3.5", QVGA (320 x 240 dots), 65,536 colors, RS-232C/422/485, USB (Host x1, Device x1), Ethernet, DC24V

Option Items * We offer various cables for connections to control devices via serial interfaces. For details, please refer to the manual.

** * is changed with the version of software.

Product Name	Model No.	Description
GP-Pro EX	EXEDV**	Screen editor software Ver.2.71 or later
Interface USB	USB Front Cable (1m)	CA5-USBEXT-01 Extension cable attaching USB interface to front panel.
	USB-Serial (RS-232C) Conversion Cable (0.5m)	CA6-USB232-01 Cable to convert the USB interface of a GP unit into a serial (RS-232C) interface.
	USB Transfer Cable (USB Type A/mini B)(1.8 m)	ZC9USCBMB1 Cable for transferring screen data from a PC (USB Type A) to the GP unit (USB mini B).
	USB Panel-mount Extension Cable (USB mini B) (1 m)	ZC9USEXMB1 Extension cable attaching to the USB (mini B) interface on the front side of the operation panel.
GP unit Description Screen Protection Sheet	For GP-4201TM: CA6-DFS4-01 For GP-4301TM: PFXZCBDS61	Disposable, dirt-resistant sheet for the GP unit's screen. (5 sheets/set) (Hard type)
Accessories Kit	PFXZGMAK1	Anti-rotation Tee*1, USB cable clamp to prevent disconnection (USB Type A*1, Mini B, for 1 port), 2mm-high spacer to adjust installation panel thickness (1pc/each)

*1 Please purchase when the product is damage or lost.

Maintenance Items

Product Name	Model No.	Description
Display Installation Nut	PFXZGMNT1	Nut to install the display module (10 pcs/set)
Socket Wrench	PFXZGMSW1	Socket wrench to tighten and loosen the display installation nut (1 pc/set)
DC Power Supply Connector	PFXZGMCNDC1	Connector to connect DC power supply cables (5 pcs/set)

WARNING

HAZARD OF OPERATOR INJURY, OR UNINTENDED EQUIPMENT DAMAGE

Before operating any of these products, be sure to read all related manuals thoroughly.

Failure to follow these instructions can result in death or serious injury, unintended equipment damage.

- For printing purposes, the colors in this catalog may differ from those of the actual unit.
- Actual user screens may differ from the screens shown here.

- All product names used in this catalog are the registered trademarks or trademarks of their respective companies.
- All information contained in this catalog is subject to change without notice.

Pro-face Pro-face is a registered trademark of Digital Electronics Corporation in Japan, U.S.A., Canada, Europe and other areas and countries.

Technical Support Web

Otasuke Pro!

<http://www.pro-face.com/otasuke/>

Global Head Office

Digital Electronics Corporation
[JAPAN] Tel: +81-(0)6-6613-3116

[AUSTRALIA] Tel: +61 (0)3 9550 7395,

[DENMARK] Tel: +45 70 22 01 22,

[GERMANY] Tel: +49 (0)212 258 260,

[POLAND] Tel: +48 22 465 66 62,

[SPAIN] Tel: +34 (0)93 846 07 45,

[TAIWAN] Tel: +886-(0)2-2657-1121,

North/South American Head Office

Pro-face America, Inc.
[U.S.A.] Tel: +1-734-429-4971

[AUSTRIA] Tel: +43 7236 3343 620,

[ENGLAND] Tel: +44 (0)2476 511288,

[INDIA] Tel: +91 80 3066 7454/7456,

[RUSSIA] Tel: +007(812)336 47 06,

[SWEDEN] Tel: +46 46 540 90 70,

[THAILAND] Tel: +66-(0)2-617-5678

European Head Office

Pro-face Europe B.V.
[THE NETHERLANDS] Tel: +31 (0)23 55 44 094

[CHINA] Tel: +86-(0)21-6361-5175,

[FRANCE] Tel: +33 (0)1 60 21 22 91,

[ITALY] Tel: +39 0362 59 96 1,

[SOUTH KOREA] Tel: +82-(0)2-2630-9850,

[SWITZERLAND] Tel: +41 (0)43 343 7272,

[SINGAPORE] Tel: +65 6832 5533